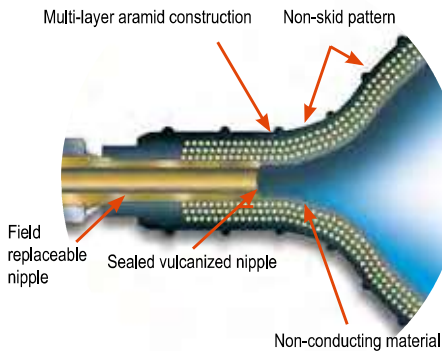


Model Shown:
IJ2211T



▶ **The non-skid reinforced inflatable jack is perfect for many applications**



Features

LOW HEIGHT, HEAVY-DUTY INDUSTRIAL INFLATABLE AIR JACKS.

- Non-inflated jacks are less than 25,4 mm thick, making lifting tasks in small spaces seem routine.
- Constructed of non-conducting, high quality rubber material with multi-layer aramid fiber reinforcement.
- The top and bottom surface of the jack has a skid resistant, interlocking pattern to assist in alignment of two jacks being used together.
- Heavy attachment handles are provided on the two largest jacks for attachment of a rope or hook to help in positioning the jack.
- The jacks can be used at ambient temperatures of -20°C to + 50°C.
- The controller, shut-off and air hoses are all equipped with an industrial interchange style quick-disconnect air coupler. Female half coupler bodies have a locking collar to help the operator avoid accidentally disconnecting the jack while under load.
- Single jack controller with “dead man” control (part no. 350090) can be used individually, or in multiples to regulate the number of jacks desired.

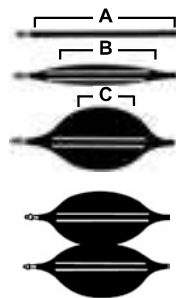


Safety Hints

1. Inspect before and after each use.
2. Replace if any signs of degradation or wear that may affect safety or performance.
3. Keep the product clean.
4. Store properly.



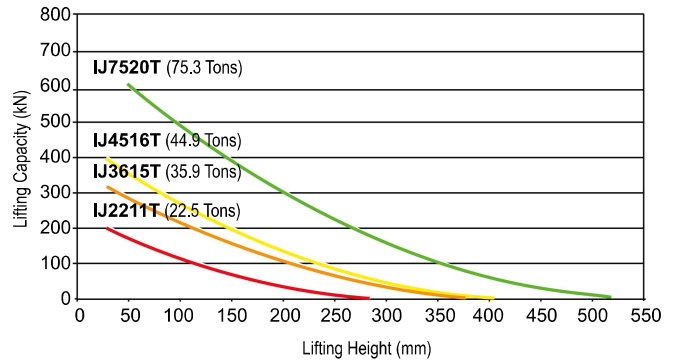
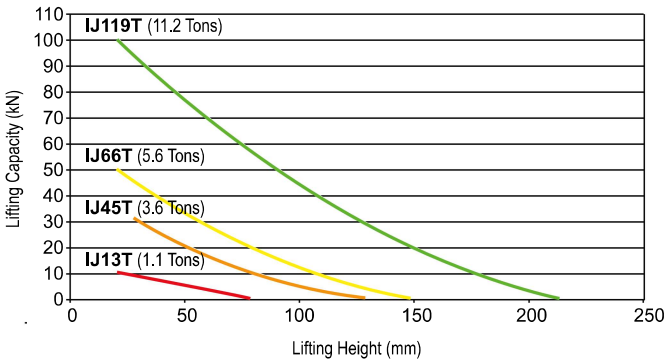
Maximum Effective Lifting Area



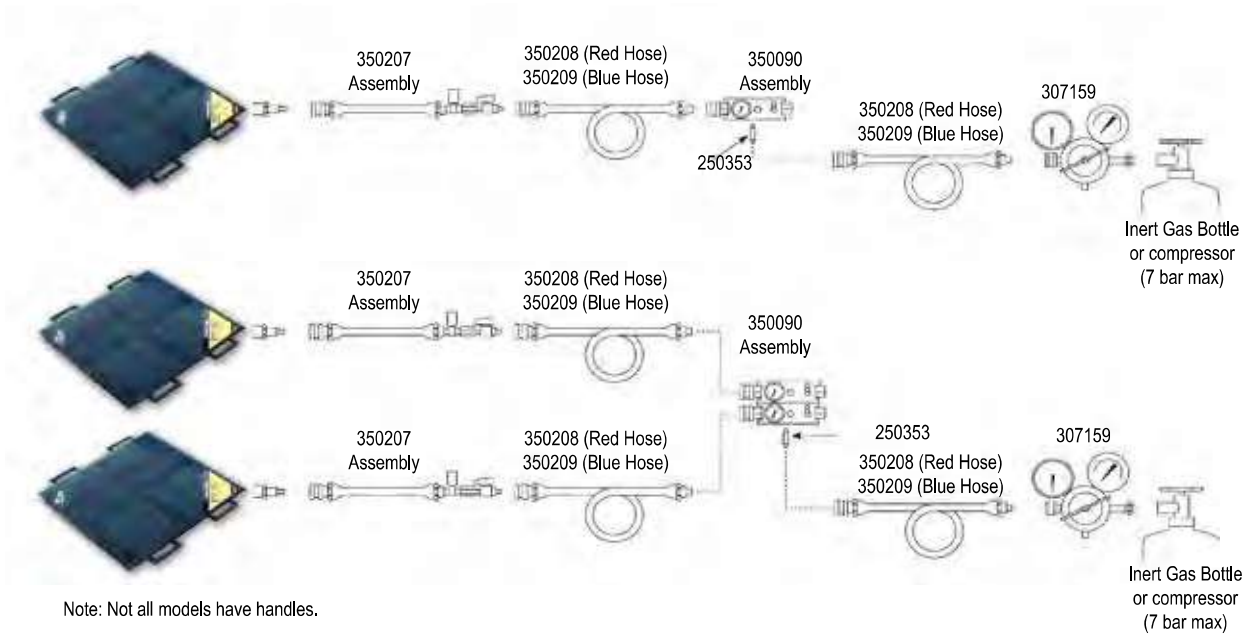
All lifting capacities mentioned in the charts are measured at the maximum effective lifting area (A). As the jack is inflated (B), this effective area decreases (C) due to the rounded shape of the jack. Lifting capacity also decreases (see performance chart).

Stack up to two jacks together to increase effective lifting height.

Performance Specifications



Typical Set-Up




Ordering Information


Order Number	Lifting Cap. (metric tons)	Lifting Height (mm)	Air Volume (l)	Water Volume (l)	Length (mm)	Width (mm)	Thickness (mm)	Prod. Wt. (kg)
IJ13T	1,0	79	3,3	0,7	152	152	22	0,6
IJ45T	3,3	130	16,2	1,8	229	229	22	1,5
IJ66T	5,1	150	22,5	2,5	279	279	22	2,0
IJ119T	10,2	216	76,5	8,5	381	381	25	4,1
IJ2211T	20,4	290	189	21	508	508	25	7,0
IJ3615T	32,6	381	450	50	660	660	25	13,2
IJ4516T*	40,8	404	558	62	965	965	25	15,0
IJ7520T*	68,3	521	1206	134	914	914	25	24,0

* Included molded carry handles.


PRESSURE REDUCING VALVE

	Order No.	Description
	307159	Pressure reducing valve. Allows use of bottled gases to operate jacks (works on CGA-580 Nitrogen/Argon/Helium bottles). Contains standard bottle fitting on inlet and 1/4" industrial interchange female outlet. Wt., 1,8 kg.


AIR CONTROLLER - SINGLE JACK

	Order No.	Description
	350090	Air controller for single jack. Equipped with relief valve and pressure gauge. Wt., 0,9 kg.


SHUT-OFF HOSE WITH SHUT-OFF VALVE AND PRESSURE RELIEF VALVE

	Order No.	Description
	350207	Shut-off hose with shut-off valve and pressure relief valve. Includes a female and male quick coupler. Wt., 0,3 kg.


AIR HOSES

	Order No.	Description
	350208	Air hose. Red, 9 m long., 3/8" I.D., includes 250341 female and 250342 male quick coupler. Wt., 2,7 kg.
	350209	Air hose. Blue, 9 m long., 3/8" I.D., includes 250341 female and 250342 male quick coupler. Wt., 2,7 kg.


FEMALE QUICK COUPLER

	Order No.	Description
	250343	Female quick coupler. 1/4" industrial interchange x 1/8" NPT female. Wt., 0,05 kg.


MALE QUICK COUPLER

	Order No.	Description
	250353	Male quick coupler. 1/4" industrial interchange x 1/8" NPT male. Wt., 0,05 kg.


FEMALE QUICK COUPLER

	Order No.	Description
	250682	Female quick coupler. 1/4" industrial interchange x 1/4" NPT male. Wt., 0,05 kg.


CONNECTOR 1/8" NPT MALE

	Order No.	Description
	15235	Connector 1/8" NPT male x 1/4" NPT female. Wt., 0,05 kg.

FEMALE QUICK COUPLER

	Order No.	Description
	250341	Female quick coupler. 1/4" industrial x 3/8" I.D. hose. Wt., 0,2 kg.

MALE QUICK COUPLER

	Order No.	Description
	250342	Male Quick coupler. 3/8" I.D. Hose. Wt., 0,05 kg.