

Model Shown:  
**JEM5526,PMA55S,PME55S**



Air pump and cart module

Electric pump and cart module

**Features**

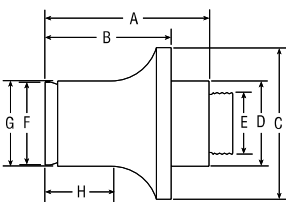
**PORTABLE AND COMPACT, IDEAL FOR LOCOMOTIVE/RAIL CAR, MINING AND HEAVY EQUIPMENT MAINTENANCE.**

- Modular design allows you to change lifting modules to suit your tonnage or height requirements.
- Select the collapsed height to fit your most frequent application and add jacking modules to suit your needs.
- Exclusive load control system provides positive, chatter-free control when lowering the load.
- Remote operation for maximum operator safety and control, motor or/an valve options.
- Easy to maneuver with large tires and small "footprint" make it easy to scoot into the tightest quarters.
- Adjustable, heavy-duty handle makes this jack easy to move, position under vehicles.
- Shielded and sheltered hydraulic lines for safer, longer, trouble-free service.



Jacks

**JACK MODULE EXTENSION**



Order Number	Cap.	A	B	C	D	E	F	G	H	Prod. Wt. (kg)
	(tons)	(mm)	(mm)	(mm)	(mm)	(in.)	(mm)	(mm)	(mm)	
58945	55	223,8	173,0	127,0	66,8	1 11/18-8UNC	63,5	66,8	92,2	9,5
58943	100	228,6	177,8	174,8	98,6	2 3/4-12UNC	95,3	98,6	95,3	18,1
58944	150	219,2	168,4	203,2	114,3	3 1/4-8UNC	111,3	114,3	88,9	22,7

**Ordering Information - Cribbing Block sets - Includes one Jack Module Extension**

Order Number	55 Ton CBS55		100 Ton CBS100		150 Ton CBS150		200 Ton CBS200	
No. in Set	(mm)	(mm)	(mm)	(mm)	(mm)	(mm)	(mm)	(mm)
A	381,1	76,2	38,1	76,2	38,1	76,2	38,1	76,2
B	44,4	82,5	44,4	82,5	44,4	82,5	44,4	82,5
C	139,7	139,7	139,7	139,7	222,2	222,2	254,0	254,0
Jack Module Ext.	173,0		177,8		168,3		168,3	
Total Stack Ht.	515,9		520,7		512,2		512,2	
Product Weight (kg.)	16,3		30,9		38,6		47,7	

Pump Module, include Remote Pendant		
Pump	Motor Only	Motor & Valve
Air	PMA55	PMA55S
Electric	PME55	PME55S
Electric	PME355	PME355S
Air	PMA355	PMA355S

Jack Modules				
Tonnage	Cylinder Stroke (mm)	Collapsed Height		
		660,4 mm	838,2 mm	1143,0 mm
55	333	JM25	JM35	JM45
100	333	JM210	JM310	JM410
150	461	JM215 †	JM315	JM415
200	461	JM220 *	JM320	JM420
300	333	Contact Factory		

\* Collapsed height; 711 mm and stroke 333 mm  
† Stroke 333 mm.

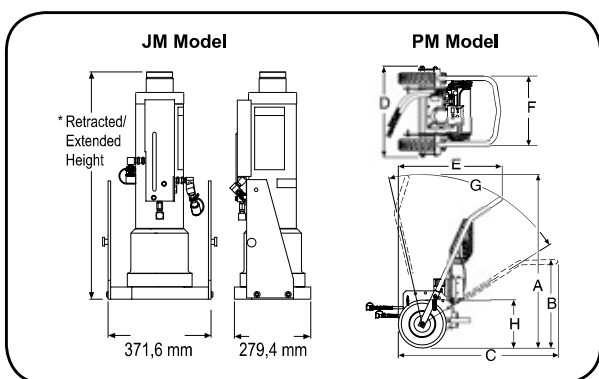


### PUMP & CART MODULES

Pump and cart modules contain hydraulic pump, cart, remote control and all hoses and fittings required to connect to a jack module.

### JACK MODULES

Jack modules easily separate from the pump and cart module.



### Technical Dimensions

Model Series	A (mm)	B (mm)	C (mm)	D (mm)	E (mm)	F (mm)	G* (deg.)	H (mm)
PMA	1464	752	1353	762	872	594	70°	406 Tire Dia.
PME								

\* Total range with varying degree increments.

### Ordering Information - Complete with Pump and Jack Modules, Fully Assembled

Order Number	Cap. (tons)	Retracted Height (mm)	Extended Height (mm)	Stroke (mm)	Pump Type	Power Required	Valve Type	Remote Control
JEM5526	55	660,4	994	333	Electric	13/25 amps	Manual	Motor Only
JAM10033	100	838,2	1172	333	Air	1,4 cm³/min @ 6 bar	Manual	Motor Only
JAR10033	100	838,2	1172	333	Air	1,4 cm³/min @ 6 bar	Air Pilot	Motor & Valve
JEM15026	150	660,4	994	460,4	Electric	25 amps	Manual	Motor Only
JAM15033	150	838,2	1173	460,4	Air	1,4 cm³/min @ 6 bar	Manual	Motor Only

Jacks