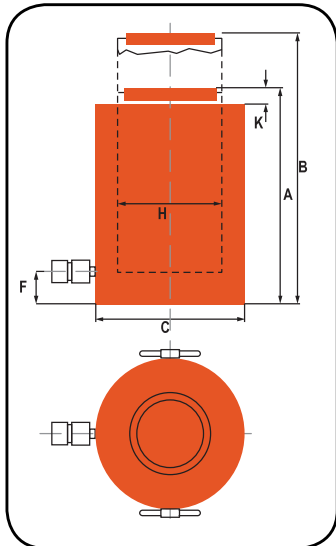


Model Shown:
RC7406C



Technical Dimensions



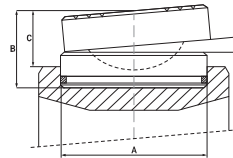
Features

HIGH-TONNAGE, LOW CYCLE, GRAVITY RETURN CYLINDERS.

- Overflow port (weep hole) prevents piston from being overextended under load.
- Alloy heat treated piston and body for reliability and strength.
- Plated piston rod increases corrosion resistance and gives superior bearing support.
- Complies with ANSI / ASME B30.1 safety standards.



Optional Swivel Load Caps Ordering Info



Reduce the effects of off-center loading. Tilt up to 5 degrees. Radial grooves on top of cap reduce load slippage. Notch across face of each cap helps keep loads having a round shaped center.

Used with Cylinder	Swivel Cap Order No.	Wt. (kg)	A (mm)	B (mm)	C (mm)
RC740_D	2000822	19,3	200,1	78,7	55,9
RC965_D	2000823	40	248,9	104,1	76,2
RC1220_D	2000825	113	322,6	175,3	124,5



Hydraulic Hoses

Heavy-duty and thermo plastic hydraulic hoses to meet your requirements and safety factor.



Refer to the accessories section for details.

Ordering Information

Cyl. Cap.	Stroke	Order No.	Oil Cap.	A	B	C	F	H	K	Bore Dia.	Cylinder Effective Area	Metric Tons at 700	Prod. Wt.
				Retracted Height	Extended Height	Outside Dia.	Base to Port	Piston Rod Dia.	Piston Rod Protrusion				
(ton)	(mm)		(cm ³)	(mm)	(mm)	(mm)	(mm)	(mm)	(mm)	(mm)	(cm ²)	(bar)	(kg)
740	50,8	RC7402C	4811	265	315	430	65	350	9	350	962,0	673,5	300
	152,4	RC7406C	14432	365	515	430	65	350	9	350	962,0	673,5	416
	254,0	RC74010C	24053	465	715	430	65	350	9	350	962,0	673,5	530
965	50,8	RC9652C	6280	290	340	490	70	400	10	400	1256,6	878,7	423
	152,4	RC9656C	18848	390	540	490	70	400	10	400	1256,6	878,7	577
	254,0	RC96510C	31401	490	740	490	70	400	10	400	1256,6	878,7	725
1220	50,8	RC12202C	7949	415	465	550	80	450	10	450	1590,4	1113,3	766
	152,4	RC12206C	23856	440	665	550	80	450	10	450	1590,4	1113,3	960
	254,0	RC122010C	40184	615	865	550	80	450	10	450	1590,4	1113,3	1147