

Model Shown:

**HT50A, HT200**



**Features**

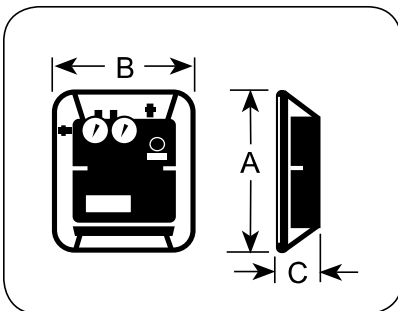
**300 AND 750 L/MIN IN-LINE HYDRAULIC TESTERS**

- Accurately measure oil flow, pressure and temperature on in-plant equipment, forklifts, machine tools and more.
- Temperature and flow readings are in Imperial and Metric and accurate to within  $\pm 2\%$  of full scale.
- Dual pressure gauges for high and low pressure readings. Low pressure gauge is automatically shut-off and protected as pressure rises beyond its maximum reading.
- Automatic pressure compensating feature lets you increase flow without affecting pressure setting.
- Reverse flow through tester will not cause damage. A replaceable safety disc ruptures if pressure exceeds upper limit.
- Solid state voltage regulator eliminates errors caused by voltage change during testing.

**200 L/MIN IN-LINE HYDRAULIC TESTER**

- Troubleshoots systems with capacities to 200 l/min at pressures less than 350 bar. Accurately measure oil flow to  $\pm 5\%$ , pressure to within 2% and temperature readings within 1%.
- Pressure gauge is liquid filled to dampen system pulsation.

Tools



**Ordering Information**

Order No.	Max. Flow (l/min.)	Scale	Flow Range		Max. Oper. Press. (bar)	Temp. Scale Range (°C)	Port Sizes	A	B	C	Prod. Wt. (kg)
			(gpm)	(l/min.)				(mm)	(mm)	(mm)	
HT50A	200	—	0 - 50	0 - 200	345	-6 - 114	1-1/16-12UN Female O-Ring with Union Adapt 3/4" NPTF female.	311	159	255	16,8
HT75	300	High	15 - 75	50 - 300	345	40 - 120	3/4" NPT Swivel	349,3	301,6	146,0	8,6
		Low	3 - 15	10 - 60							
HT200	750	High	25 - 200	100 - 750	345	40 - 120	1 1/2" SAE Split Flange	403,5	336,6	171,5	13,6
		Low	5 - 40	20 - 150							

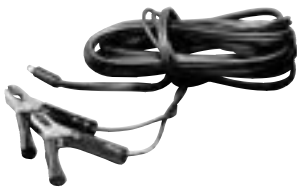
**DUAL GAUGE CONVERSION KIT FOR 50 GPM TESTER.**



Provides more precise low pressure readings. Remove pressure gauge block and gauge from tester and replace it with this block. Install high pressure gauge from tester (350 bar) onto this new block.

Order No.	Description
307281	Dual gauge conversion kit. Consists of gauge mounting block, pulsation dampener, thermal overload protector, low pressure gauge and gauge protector. Low pressure gauge calibrated 0-42 bar. Wt. 0,45 kg.

**AUXILIARY POWER CORDS FOR USE WITH 300 AND 750 L/MIN TESTERS**



**CAUTION:** For use on negative ground systems only.

Order No.	Description
37045	Auxiliary power cord. For use with any 12 or 24V battery to remotely power tester. Wt. 0,5 kg.

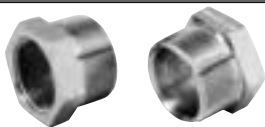
**HOSES**



Order No.	Description
9785	Hose, 19,1 mm I.D. x 3/4" NPTF male both ends. 3 m. length. 155 bar working pressure. (2 req'd on 200 and 300 l/min testers). Wt., 3 kg.
9786 *	Hose, 25,4 mm I.D. x 1-1/4" NPT male both ends. Recommended max. flow 340 l/min., with a working pressure of 280 bar. Wt., 6,3 kg.
9787 *	Hose, 31,8 mm I.D. x 1-1/4" NPT male both ends. Recommended max. flow 530 l/min., with a working pressure of 210 bar. Wt., 6,4 kg.
9788 *	Hose, 38,1 mm I.D. x 1-1/2" NPT male both ends. Recommended max. flow 750 l/min., with a working pressure of 175 bar. Wt., 11,4 kg.

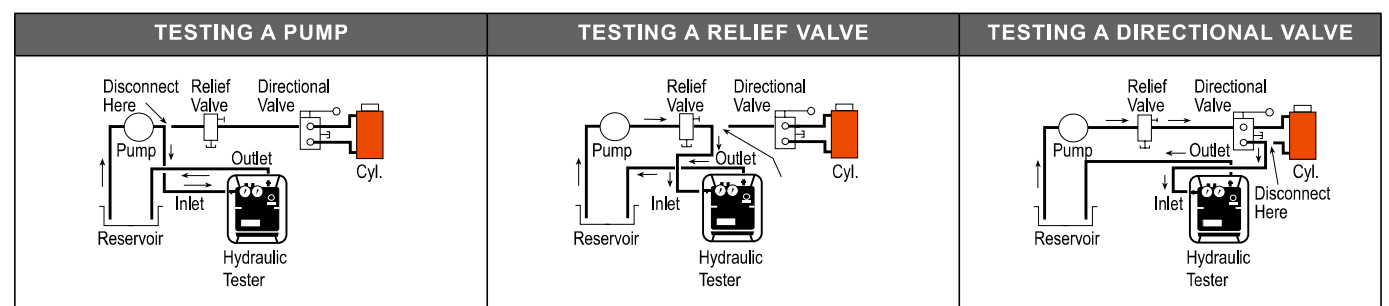
\* Hose assemblies are all 4-ply spiral wound wire, 10 ft. long. For use with 200 gpm testers.

**HOSE REDUCER BUSHINGS**



Order No.	Description
203264	Consists of two hose reducer bushings, 1-1/4" NPT female x 1-1/2" NPT male end. Needed to adapt 9786 25,4 mm I.D. hose and 9787 31,8 mm I.D. hose to tester. Wt., 1 kg.

**Typical Set-up: Testing the pump, relief valve, and directional valve**



**HYDRAULIC FITTINGS FOR USE WITH ALL TESTERS.**

	<b>16954</b>	<b>90° Swivel Adapter.</b> 3/4" NPTF male x 3/4" NPSM female. Wt., 0,4 kg.		<b>26073</b>	<b>Swivel adapter.</b> 3/4" NPTF female x 1/2" NPSM female. Wt., 0,1 kg.
	<b>22041</b>	<b>Coupler.</b> 3/4" NPTF male x 3/4"-16 female ORB. Wt., 0,2 kg.		<b>26074</b>	<b>45° Swivel Adapter.</b> 3/4" NPSM female x 3/4" NPTF male. Wt., 0,3 kg.
	<b>22042</b>	<b>Coupler.</b> 3/4" -16 female ORB x 1-1/16"-12 female 37° JIC. Wt., 0,2 kg.		<b>26075</b>	<b>Swivel Adapter.</b> 3/4" NPSM female x 3/4" NPTF female. Wt., 0,2 kg.
	<b>22043</b>	<b>Coupler.</b> 3/4" -16 female ORB x 9/16"-18 female 37° JIC. Wt., 0,2 kg.		<b>26076</b>	<b>Swivel Adapter.</b> 3/4" NPTF male x 3/4" NPSM female. Wt., 0,2 kg.
	<b>22044</b>	<b>Coupler.</b> 3/4" -16 female ORB x 1/2"-20 female 37° JIC. Wt., 0,2 kg.		<b>26077</b>	<b>Cap.</b> 3/4" NPTF. Wt., 0,3 kg.
	<b>27737</b>	<b>Swivel Adapter.</b> 3/4" -16 male x 3/4" NPSM female. For use with No. 9785 hose, which has 3/4" NPTF male thread. Wt., 0,1 kg.		<b>26078</b>	<b>Plug.</b> 3/4" NPTF. Wt., 0,1 kg.
	<b>27287</b>	<b>Coupler.</b> 3/4" -16 UNF female ORB x 7/8"-14 UNF female 37° JIC. Wt., 0,2 kg.		<b>26079</b>	<b>Adapter.</b> 3/4" NPTF female x 1-1/16" -12 male ORB. Wt., 0,2 kg.
	<b>13449</b>	<b>Cap.</b> 1-1/16"-12 UNF female, 3/4" O.D. tube, 37° flare. Wt., 0,1 kg.		<b>208402</b>	<b>45° Union Adapter.</b> 7/8"-14 UNF male 37° JIC x 3/4" NPTF female. 3,000 psi working pressure. Wt., 0,3 kg.
	<b>26068</b>	<b>45° Swivel Adapter.</b> 1" NPTF male x 3/4" NPSM female. Wt., 0,4 kg.		<b>208401</b>	<b>45° Union Adapter.</b> 7/8"-14 UNF male 37° JIC x 3/4" NPTF female. Wt., 0,4 kg.
	<b>26069</b>	<b>Swivel Adapter.</b> 1" NPTF female x 3/4" NPSM female. Wt., 0,2 kg.		<b>206753</b>	<b>Coupler.</b> 1-15/16"-12 UNF female 37° JIC x 3/4" NPTF female. Wt., 0,5 kgs.
	<b>26070</b>	<b>Adapter.</b> 1" NPTF male x 3/4" NPTF female. Wt., 0,1 kg.		<b>26666</b>	<b>Connector.</b> 1-5/16"-12 UNF male 37° JIC x 3/4" NPTF male. Wt., 0,2 kg.
	<b>26071</b>	<b>Service Tee.</b> 3/4" NPTF female (2) x 3/4" NPTF male. Wt., 0,4 kg.		<b>28984</b>	<b>Straight Adapter.</b> 3/4" NPTF female x 1-3/16"-12 UN male 37° JIC. Wt., 0,3 kg.
	<b>26072</b>	<b>Swivel Adapter.</b> 3/4" NPSM female x 1/2" NPTF male. Wt., 0,2 kg.		<b>28985</b>	<b>Straight Adapter Union.</b> 1-3/16"-12 UN female 37° JIC x 3/4" NPTF female. Wt., 0,6 kgs.

**NOTE:** The recommended maximum working pressure on the above fittings is 350 bar (except the 208402 is 210 bar).

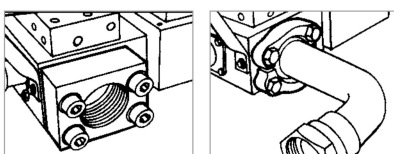
**HT200 HYDRAULIC TESTER ACCESSORIES**

Attach to the HT200 hydraulic tester by the use of flanged-head adapters and split flanges, or by a set of female straight adapters.



**FLANGED HEAD ADAPTER UNIONS & SPLIT FLANGE KIT**

Order No.	Description
<b>203154</b>	<b>Straight flange adapter.</b> 38,1 mm flanged-head to 1-1/2" NPSM female swivel. Wt., 1 kg.
<b>203155</b>	<b>45° flange adapter.</b> 38,1 mm flanged-head by 1-1/2" NPSM female swivel. Wt., 1,5 kg.
<b>203156</b>	<b>90° flange adapter.</b> 38,1 mm flanged-head by 1-1/2" NPSM female swivel. Wt., 1,9 kg.
<b>203017</b>	<b>Split Flange Kit.</b> Consists of four flange halves and attaching bolts to permit use of 38,1 mm I.D. flange adapters listed at left. Wt., 1,3 kg.



**FEMALE STRAIGHT FLANGE ADAPTER**

Order No.	Description
<b>203003</b>	Consists of two female straight flange adapters with attaching bolts. When attached to inlet/outlet ports, allows connection of 1-1/2" NPT male hose ends to tester. Wt., 3,9 kg.