

Model Shown:  
**Various Types of C-Series**



**>Features**

**RUGGED, HIGH QUALITY CYLINDER USED FOR LIFTING AND PRESSING.**

- Aluminum bronze bearing reduces wear caused by off-center loads.
- Maximum sized springs speed piston return and increase spring life.
- Collar threads are standard on all C-Series models, simplifying fixturing applications.
- Removeable rubber boots protects collar threads during transport and storage.
- Solid steel cylinder body for durability.
- Chrome plated piston rod resists wear and corrosion.
- Wide range of accessories available that mount onto the piston rod, collar, or base.
- Base mounting holes standard on 5 through 55 ton cylinders and optional on 75 and 100 ton cylinders.
- A 3/8" NPTF female half coupler is standard.
- Complies with ANSI / ASME B30.1 safety standards.

▶ **C10010C used in this pulling application.**



**i Best Practice for Cylinder Selection**



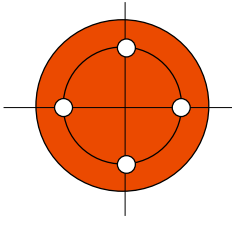
Power Team recommends using 80% of the rated capacity and stroke to maximize product performance and safety.

**🛒 Optional Cylinders Lifting Handle**



**Order Number: 420655OR9**  
Lifting handle for "C" series, 25 ton cylinders

▶ **Technical Dimensions, Base Mounting Holes**



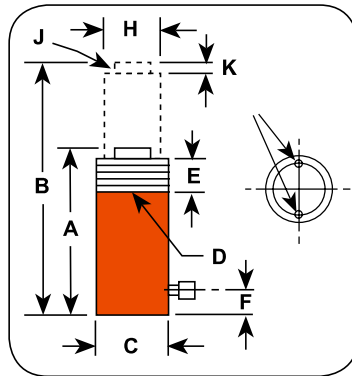
Cylinder Tonnage	5	10	15	25	30	55	75*	100*
# of Holes	2†	2†	2†	2†	2†	2†	4	4
Thread Size	1/4 - 20	5/16 - 18	3/8 - 16	1/2 - 13	1/2-13	1/2 - 13	3/4 - 10	1 - 8
Thread Depth (mm)	9,50	12,70	12,70	19,10	19,10	19,10	25,40	25,40
Bolt Circle Diameter (mm)	25,40	39,70	47,60	58,70	73,66	95,30	114,30	120,70

\* Consult Factory (45° from coupler)  
† 90° from coupler

► **Technical Dimensions**

Cylinder Load Caps furnished with "C" Series Cylinders:

5 ton cylinders	No. 201375
10 ton cylinders	No. 201362
15 ton cylinders	No. 201362
25 ton cylinders	No. 201412
30 ton cylinders	No. 201412
55 ton cylinders	No. 36161
75 ton cylinders	No. 36161
100 ton cylinders	No. 36161



► **C10010C used in this lift application.**



► **Ordering Information**

Cyl. Cap. (ton)	Stroke (mm)	Order No.	Oil Cap. (cm <sup>3</sup> )	A		C	D	E	F	H	J	K	Bore Dia. (mm)	Cylinder Effective Area (cm <sup>2</sup> )	Metric Tons at 700 (bar)	Prod. Wt. (kg)
				Re-tracted Height (mm)	Ex-tended Height (mm)											
5	25,4	C51C	18	110,3	138,1	38,1	1 1/2-16	28,6	19,1	25,4	3/4-16 x 15,9	6,4	28,6	6,4	4,5	1,0
	82,6	C53C	52	165,1	247,7	38,1	1 1/2-16	28,6	19,1	25,4	3/4-16 x 15,9	6,4	28,6	6,4	4,5	1,5
	133,4	C55C	85	215,9	349,3	38,1	1 1/2-16	28,6	19,1	25,4	3/4-16 x 15,9	6,4	28,6	6,4	4,5	1,8
	184,2	C57C	118	273,1	457,2	38,1	1 1/2-16	28,6	19,1	25,4	3/4-16 x 15,9	6,4	28,6	6,4	4,5	2,3
	235,0	C59C	151	323,9	558,8	38,1	1 1/2-16	28,6	19,1	25,4	3/4-16 x 15,9	6,4	28,6	6,4	4,5	2,6
10	25,4	C101C	36	92,1	117,5	57,2	2 1/4-14	28,6	19,1	38,1	1-8 x 19,1	6,4	42,8	14,4	10,2	2,8
	54,0	C102C	79	122,0	172,8	57,2	2 1/4-14	28,6	19,1	38,1	1-8 x 19,1	6,4	42,8	14,4	10,2	2,3
	104,8	C104C	151	171,5	276,2	57,2	2 1/4-14	28,6	19,1	38,1	1-8 x 19,1	6,4	42,8	14,4	10,2	3,0
	155,6	C106C	225	247,7	403,2	57,2	2 1/4-14	28,6	19,1	38,1	1-8 x 19,1	6,4	42,8	14,4	10,2	4,3
	206,4	C108C	326	298,5	504,8	57,2	2 1/4-14	28,6	19,1	38,1	1-8 x 19,1	6,4	42,8	14,4	10,2	5,0
	257,2	C1010C	370	349,3	606,4	57,2	2 1/4-14	28,6	19,1	38,1	1-8 x 19,1	6,4	42,8	14,4	10,2	5,9
	308,0	C1012C	444	400,1	708,0	57,2	2 1/4-14	28,6	19,1	38,1	1-8 x 19,1	6,4	42,8	14,4	10,2	6,6
	358,8	C1014C	518	450,9	809,6	57,2	2 1/4-14	28,6	19,1	38,1	1-8 x 19,1	6,4	42,8	14,4	10,2	7,3
	406,4	C1016C	592	520,7	927,1	57,2	2 1/4-14	28,6	19,1	38,1	1-8 x 19,1	6,4	42,8	14,4	10,2	8,4
15	25,4	C151C	51	123,8	149,2	69,9	2 3/4-16	28,6	19,1	44,5	1-8 x 19,1	6,4	50,8	20,3	14,2	3,4
	54,0	C152C	110	149,2	203,2	69,9	2 3/4-16	28,6	19,1	44,5	1-8 x 19,1	6,4	50,8	20,3	14,2	4,0
	104,8	C154C	211	200,0	304,8	69,9	2 3/4-16	28,6	19,1	44,5	1-8 x 19,1	6,4	50,8	20,3	14,2	5,2
	155,6	C156C	315	271,4	427,0	69,9	2 3/4-16	28,6	19,1	44,5	1-8 x 19,1	6,4	50,8	20,3	14,2	6,9
	206,4	C158C	418	322,2	528,6	69,9	2 3/4-16	28,6	19,1	44,5	1-8 x 19,1	6,4	50,8	20,3	14,2	8,1
	257,2	C1510C	521	373,0	630,2	69,9	2 3/4-16	28,6	19,1	44,5	1-8 x 19,1	6,4	50,8	20,3	14,2	9,4
	308,0	C1512C	625	423,8	731,8	69,9	2 3/4-16	28,6	19,1	44,5	1-8 x 19,1	6,4	50,8	20,3	14,2	10,5
	358,8	C1514C	728	474,6	833,4	69,9	2 3/4-16	28,6	19,1	44,5	1-8 x 19,1	6,4	50,8	20,3	14,2	11,8
	406,4	C1516C	824	522,3	928,7	69,9	2 3/4-16	28,6	19,1	44,5	1-8 x 19,1	6,4	50,8	20,3	14,2	12,8
25	25,4	C251C	84	139,7	165,1	85,7	3 5/16-12	49,2	25,4	57,2	1 1/2-16 x 25,4	9,5	65,1	33,2	23,4	5,4
	50,8	C252C	169	164,5	215,3	85,7	3 5/16-12	49,2	25,4	57,2	1 1/2-16 x 25,4	9,5	65,1	33,2	23,4	6,3
	101,6	C254C	338	215,9	317,5	85,7	3 5/16-12	49,2	25,4	57,2	1 1/2-16 x 25,4	9,5	65,1	33,2	23,4	8,0
	158,8	C256C	528	273,1	431,8	85,7	3 5/16-12	49,2	25,4	57,2	1 1/2-16 x 25,4	9,5	65,1	33,2	23,4	9,8
	209,6	C258C	697	323,9	533,4	85,7	3 5/16-12	49,2	25,4	57,2	1 1/2-16 x 25,4	9,5	65,1	33,2	23,4	11,6
	260,4	C2510C	865	374,4	635,0	85,7	3 5/16-12	49,2	25,4	57,2	1 1/2-16 x 25,4	9,5	65,1	33,2	23,4	13,3
	311,2	C2512C	1036	425,5	736,0	85,7	3 5/16-12	49,2	25,4	57,2	1 1/2-16 x 25,4	9,5	65,1	33,2	23,4	15,0
362,0	C2514C	1205	476,3	838,2	85,7	3 5/16-12	49,2	25,4	57,2	1 1/2-16 x 25,4	9,5	65,1	33,2	23,4	16,7	
30	209,6	C308C	880	325,1	534,7	101,6	4-12	50,8	25,4	63,5	1 1/2-16 x 22,4	9,7	72,9	41,6	29,2	16,2
	50,8	C552C	362	174,6	225,4	127,0	5-12	55,6	34,9	79,4	None	3,2	95,3	71,2	50,1	14,7
	108,0	C554C	769	231,8	339,7	127,0	5-12	55,6	34,9	79,4	None	3,2	95,3	71,2	50,1	18,7
	158,8	C556C	1131	282,6	441,3	127,0	5-12	55,6	34,9	79,4	None	3,2	95,3	71,2	50,1	23,1
	260,4	C5510C	1853	384,2	644,5	127,0	5-12	55,6	34,9	79,4	None	3,2	95,3	71,2	50,1	30,4
75	336,6	C5513C	2398	460,4	796,9	127,0	5-12	55,6	34,9	79,4	None	3,2	95,3	71,2	50,1	35,3
	155,6	C756C	1596	314,3	469,9	146,1	5 3/4-12	44,5	31,8	95,3	None	3,2	114,3	102,6	72,1	33,3
	333,4	C7513C	3421	492,1	825,5	146,1	5 3/4-12	44,5	31,8	95,3	None	3,2	114,3	102,6	72,1	49,6
100	50,8	C1002C	675	219,1	269,9	158,8	6 1/4-12	57,2	41,3	104,8	None	3,2	130,2	133,0	93,6	28,6
	168,3	C1006C	2245	336,6	504,8	158,8	6 1/4-12	57,2	41,3	104,8	None	3,2	130,2	133,0	93,6	41,3
	260,4	C10010C	3467	428,6	689,0	158,8	6 1/4-12	57,2	41,3	104,8	None	3,2	130,2	133,0	93,6	51,3

Model Shown:

**C55CBT, C2514CBT**



**Features**

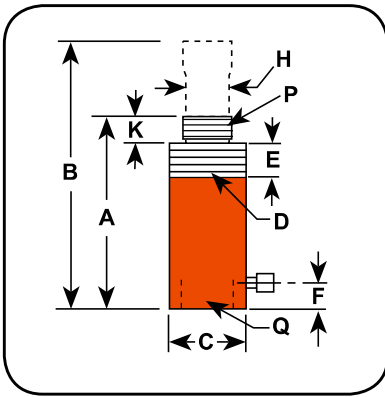
**THREADED PISTON ROD END AND BASE THREADS ACCOMMODATE ACCESSORIES AND ADAPTERS.**

- Threaded cylinder collars, piston rod ends, and internal base threads simplify mounting.
- A 9796 3/8" NPTF female half coupler is standard with each cylinder. Oil port threads are 3/8" NPTF.
- Removable threaded rod cap.
- Factory accessories do not de-rate tonnage.
- Complies with ANSI / ASME B30.1 safety Standards.

**Versatility and fixturing capabilities**



**Technical Dimensions**



**Analog Gauges**



Improve your system visibility and safety by adding an inline hydraulic gauge to your circuit.

- 9040E (63,5 mm)
- 9052E (100 mm)

**Ordering Information**

Cyl Cap.	Stroke	Order No.	Oil Cap.	A	B	C	D	E	F	H	K	P	Q	Bore Dia.	Cylinder Effective Area	Metric Tons at 700	Prod. Wt.
				Re-tracted Height	Ex-tended Height	Outside Dia.	Collar Thread	Collar Thread Length	Base to Port	Piston Rod Dia.	Piston Rod Protru-sion	Piston Rod Thread (NPT)	Internal Base Thread (NPSM)				
(ton)	(mm)		(cm <sup>3</sup> )	(mm)	(mm)	(mm)	(mm)	(mm)	(mm)	(mm)	(mm)	(in.)	(in.)	(mm)	(cm <sup>2</sup> )	(bar)	(kg)
5	133,4	C55CBT	85	266,7	400,1	38,1	1 1/2-16	28,6	47,6	25,4	28,6	3/4-14	3/4-14	28,6	6,4	4,5	2,0
10	155,6	C106CBT	228	292,1	447,7	57,2	2 1/4-14	28,6	42,9	38,1	27,0	1 1/4-11.5	1 1/4-11.5	42,9	14,4	10,2	4,7
	257,2	C1010CBT	375	393,7	650,9	57,2	2 1/4-14	28,6	42,9	38,1	27,0	1 1/4-11.5	1 1/4-11.5	42,9	14,4	10,2	6,3
25	158,8	C256CBT	528	339,7	498,5	85,7	3 5/16-12	49,2	47,6	57,2	47,6	2-11.5	2-11.5	65,1	33,3	23,4	11,1
	362,0	C2514CBT	1205	542,9	904,9	85,7	3 5/16-12	49,2	47,6	57,2	47,6	2-11.5	2-11.5	65,1	33,3	23,4	18,2

Model Shown:  
**RP25, RP55**

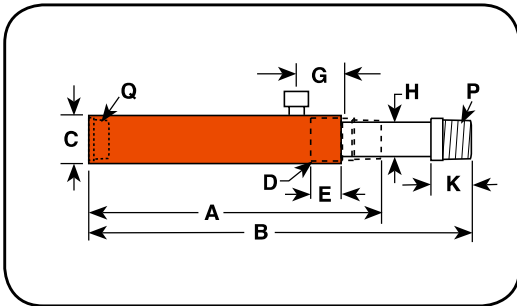


**Features**

**DESIGNED FOR PULLING AND TENSIONING APPLICATIONS.**

- Heavy-duty compression spring provides long cycle life and rapid extension of piston.
- Spring automatically extends piston rod when pump pressure is released.
- Complies with ANSI / ASME B30.1 safety standards.

**Technical Dimensions**



**Clevis Ordering Information**

Use with Cyl. No.	Order No.	A (mm)	B (mm)	C (mm)	D (mm)	E (mm)	F (mm)
RP25	421057*	130,30	109,47	33,27	50,80	19,05	25,40
RP55	421056**	152,40	127,00	38,10	63,50	22,35	31,75

\* For base mounting, extension rod 351106 is required.  
\*\* For base mounting, extension rod 351075 is required.

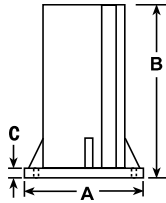
**Learn More - About Hydraulic Safety Insight**

Looking for great safety suggestions? Visit our Resource Section to get a better understanding of hydraulic and mechanical safety insights on what to look for when working around hydraulics.

**Ordering Information**

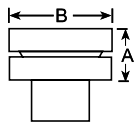
Cyl. Cap.	Stroke	Order No.	Oil Cap.	A	B	C	D	E	G	H	K	P	Q	Bore Dia.	Cylinder Effective Area	Metric Tons at 700	Prod. Wt.
				Re-tracted Height	Ex-extended Height	Outside Dia.	Collar Thread	Collar Thread Length	Cyl. Top to Port	Piston Rod Dia.	Piston Rod Protru-sion	Piston Rod Thread (NPT)	Internal Base Thread (NPSM)				
(ton)	(mm)		(cm <sup>3</sup> )	(mm)	(mm)	(mm)	(in.)	(mm)	(mm)	(mm)	(mm)	(in.)	(in.)	(mm)	(cm <sup>2</sup> )	(bar)	(kg)
2	127,0	RP25	45	242,9	379,9	44,5	1 1/2 - 16	25,4	42,9	19,1	25,4	3/4 - 14	3/4 - 14	28,6	3,5	2,5	1,8
5	139,7	RP55	102	301,6	441,3	57,2	2 1/4 - 14	25,4	42,9	30,2	34,9	1 1/4 - 11 1/2	1 1/4 - 11 1/2	42,9	7,3	5,1	5,0

► **Support Base**



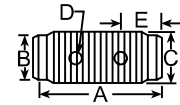
Cylinder Tons	Part No.	A (mm)	B (mm)	C (in.)
10	420062	177,8	177,8	7/16
25	420063	127,0	127,0	7/16

► **Swivel Cap**



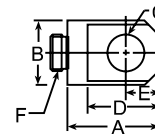
Cylinder Tons	Part No.	A (mm)	B (mm)
10 or 15	350144	22,4	36,5
25	350145	28,7	54,0
55 or 75	350376	31,8	71,4
100	351574	48,5	85,7

► **Threaded Connector**



Cylinder Tons	Part No.	A (mm)	B (mm)	C (in.)	D (mm)	E (mm)
5	25748	44,5	22,4 Dia.	3/4 - 14 NPSM	4,8 Dia.	12,7
10	25664	41,4	36,6 Dia.	1 1/4 - 11 1/2 NPSM	7,9 Dia.	14,2
25	25654	57,2	57,2 Dia.	2 - 11 1/2 NPSM	9,7 Dia.	16,0

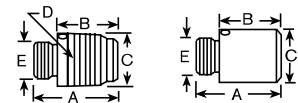
► **Piston Clevis**



Cylinder Tons	Part No.	A (mm)	B (mm)	C (mm)	D (mm)	E (mm)	F (in.)
5	350095	44,5	28,7	16,0	36,6	16,0	3/4 - 16
10 or 15*	350094	65,0	42,9	31,8	58,7	25,4	1 - 8
25**	420059	74,7	57,2	50,8	68,3	31,8	1 1/2 - 16

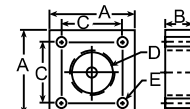
\* Can be used with RD106, RD1010 Cylinder.  
\*\* RD256 & RD2514

► **Threaded & Plain Adapters**



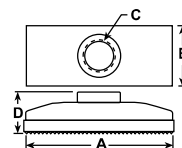
Cylinder Tons	Part No.	A (mm)	B (mm)	C (mm)	D (in.)	E (in.)
5	202178 (threaded)	41,4	28,7	26,9 Dia.	3/4 - 14 NPT	3/4 - 16 UNF-2A
10 or 15*	202179 (threaded)	46,0	26,9	41,4 Dia.	1 1/4 - 11 1/2 NPT	1 - 8 UNC-2A
25	202180 (threaded)	69,9	47,8	60,5 Dia.	2 - 11 1/2 NPT	1 1/2 - 16 UN-2A
10 or 15	350724 (plain)	50,8	31,8	37,6 Dia.	—	1 - 8 UNC-2A
25	350723 (plain)	54,1	31,8	57,2 Dia.	—	1 1/2 - 16 UN-2A

► **Cylinder Mounting Plate**



Cylinder Tons	Part No.	A (mm)	B (mm)	C (mm)	D (in.)	E (mm)
5	350099	76,2	25,4	54,1	1 1/2 - 16 UN-2B	8,6
10	350100	88,9	25,4	66,8	2 1/4 - 14 UNS-2B	8,6
15	350184	88,9	25,4	66,8	2 3/4 - 16 UN-2B	8,6
25	420064	127,0	50,8	100,8	3 5/16 - 12 UN-2B	16,8

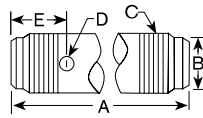
► **Cylinder Flat Base**



Cylinder Tons	Part No.	A (mm)	B (mm)	C (in.)	D (mm)
5	25750	114,3	63,5	3/4 - 14 NPSM	34,0
10 or 15*	32325	9,5	88,9	1 1/4 - 11 1/2 NPSM	36,6

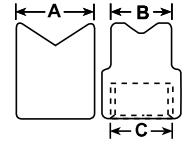
\* Items require threaded adapter when used with "C" series cylinders. Can be used on threaded "CBT" cylinders without the use of an adapter.

### ▶ Extension Rod



Cylinder Tons	Part No.	A	B	C	D	E
		(mm)	(mm)	(in.)	(mm)	(mm)
5	350895	127,0	22,4 Dia.	3/4 - 14 NPT	8,4 Dia.	50,8
5	38908	254,0	22,4 Dia.	3/4 - 14 NPT	8,4 Dia.	50,8
5	350896	457,2	22,4 Dia.	3/4 - 14 NPT	8,4 Dia.	50,8
10	350897	127,0	36,6 Dia.	1 1/4 - 11 1/2 NPT	8,4 Dia.	50,8
10	38909	254,0	36,6 Dia.	1 1/4 - 11 1/2 NPT	8,4 Dia.	50,8
10	350898	457,2	36,6 Dia.	1 1/4 - 11 1/2 NPT	8,4 Dia.	50,8

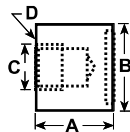
### ▶ 90° "V" Base



Cylinder Tons	Part No.	A	B	C
		(mm)	(mm)	(in.)
5	25388*	35,1	26,9	3/4 - 14 NPSM
10	25395*	54,1	54,1	1 1/4 - 14 NPSM

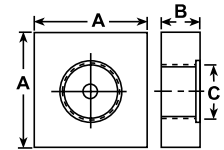
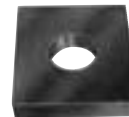
\* Items require threaded adapter when used with "C" series cylinders. They may be used on threaded "CBT" cylinders without the use of an adapter.

### ▶ Cylinder Base Attachment



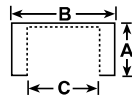
Cylinder Tons	Part No.	A	B	C	D
		(mm)	(mm)	(in.)	(mm / in.)
5	208380	41,4	44,5 Dia.	3/4 - 14 NPSM	7,1 Dia. (2) 1/4 - 20 UNC x 3/4 Lg. Socket Head Cap Screws
10	208381	47,8	63,5 Dia.	1 1/4 - 11 1/2 NPSM	8,6 Dia. (2) 5/16 - 18 UNC x 3/4 Lg. Socket Head Cap Screws
25	208382	60,5	85,9 Dia.	2 - 11 1/2 NPSM	13,5 Dia. (2) 1/2 - 13 UNC x 1 Lg. Socket Head Cap Screws

### ▶ Plunger Base



Cylinder Tons	Part No.	A	B	C
		(mm)	(mm)	(in.)
25	25652	152,4	31,8	2 - 11 1/2 NPSM

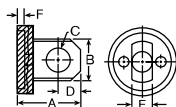
### ▶ Plain & Serrated Saddles



Cylinder Tons	Part No.	A	B	C
		(mm)	(mm)	(in.)
5	25746* (serrated)	28,7	33,3 Dia.	3/4 - 14 NPSM
10 or 15*	31772* (serrated)	28,7	50,8 Dia.	1 1/4 - 11 1/2 NPSM
25	31776* (serrated)	33,3	76,2 Dia.	2 - 11 1/2 NPSM
5	351575* (plain)	28,7	33,3 Dia.	3/4 - 14 NPSM
10	24016* (plain)	28,7	50,8 Dia.	1 1/4 - 11 1/2 NPSM
25	351576* (plain)	33,3	76,2 Dia.	2 - 11 1/2 NPSM

\* Items require threaded adapter when used with "C" series cylinders. They may be used on threaded "CBT" cylinders without the use of an adapter.

### ▶ Body Clevis †



Cylinder Tons	Part No.	A	B	C	D	E	F
		(mm)	(mm)	(mm)	(mm)	(mm)	(mm)
5	350096	52,3	28,7	16,0	16,0	14,2	6,4
10	350097	76,2	42,9	22,4	25,4	25,4	6,4
15	350098	77,7	42,9	22,4	25,4	25,4	6,4
25	420061	90,4	57,2	31,8	31,8	31,8	6,4

† Mounting screws are included.