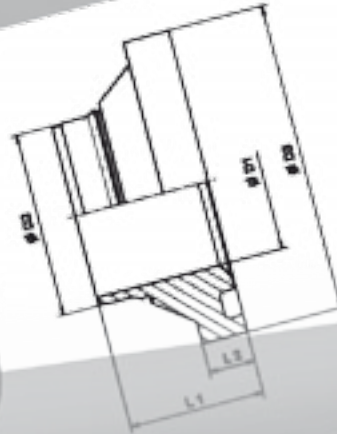


ISO 6162-1

F37 seal

on



How to order

Selecting
1. All flange sizes are clearly listed in the catalogue.

2. Open the catalogue showing detailed drawings of your choice.

3. Select the size based on the right-hand side of the catalogue.

D1	D2	D3	L1	L2	Weight (Steel) kg/1 piece	F37 seal Order code	O-Ring Order code	Insert incl. F37 seal + O-Ring Order code
25.0	32.8	45.0	22.0	7.0	0.11	F37S16X	OR34X1.0X	IN16-38X2.5TFVCF
25.0	31.8	45.0	22.0	7.0	0.10	F37S16X	OR34X1.0X	IN16-38X3.0TFVCF
25.0	29.8	45.0	21.0	7.0	0.09	F37S16X	OR30X1.0X	IN16-38X4.0TFVCF
25.0	27.8	45.0	21.0	7.0	0.11	F37S20X	OR28X1.0X	IN16-38X5.0TFVCF
29.5	31.8	50.0	22.0	7.5	0.10	F37S20X	OR34X1.0X	
27.0	29.8	50.0	21.0	7.5	0.10	F37S20X	OR30X1.0X	
25.5	27.8	50.0	22.0	7.5	0.11	F37S20X	OR28X1.0X	
31.5	35.8	50.0	22.0	7.5	0.10	F37S20X	OR37.8	
29.5	31.8	60.0	25.5	10.0	0.19	F37S24X	OR34	
27.0	29.8	60.0	25.5	10.0	0.19	F37S24X	OR34	
25.5	27.8	60.0	25.5	10.0	0.19	F37S24X	OR4	
31.5	35.8	60.0	27.0	10.0	0.20	F37S24X	OR41	
33.5	33.8	60.0	25.5	10.0	0.22	F37S32X	OR44.1	
31.5	43.8	60.0	25.5	10.0	0.24	F37S32X	OR41X1.78X	IN32-60X5.0TFVCF
36.0	39.8	60.0	27.0	10.0	0.27	F37S32X	OR53.7X1.78X	IN32-60X6.0TFVCF
35.0	37.8	70.0	24.0	10.0	0.24	F37S32X	OR50.52X1.78X	IN40-60X3.0TFVCF
41.5	43.8	70.0	26.5	10.0	0.27	F37S40X	OR47.37X1.78X	IN40-60X5.0TFVCF
37.5	37.8	70.0	27.0	10.0	0.24	F37S40X	OR53.7X1.78X	IN40-60X6.0TFVCF
35.0	33.8	70.0	27.0	10.0	0.23	F37S40X	OR50.52X1.78X	IN40-73X7.0TFVCF
					3.50	F37S40X	OR63.22X1.78X	IN40-75X3.0TFVCF
								IN40-75X5.0TFVCF



Ordering information/Nomenclature

Parflange® F37 Code Key

Flare Flange Example:

F37-3	20	-42X3.0	TFV	CF
-------	----	---------	-----	----

Part code		
Flange Type	Flange code	Footprint
F37	1	ISO 6162-1 SAE 1000
F37	3	ISO 6162-1 SAE 3000
F37	6	ISO 6162-2 SAE 6000
F37	4	ISO 6164
R	1	ISO 6162-1 SAE 1000
R	3	ISO 6162-1 SAE 3000
R	6	ISO 6162-2 SAE 6000
R	4	ISO 6164 4 Bolt Flange
R	8	*Code 6164 8-12 Bolt Flange

Size Code												
8	12	16	20	24	32	40	48	64	80	96	128	160
1/2"	3/4"	1"	1 1/4"	1 1/2"	2"	2 1/2"	3"	4"	5"	6"	8"	10"

Pipe size and Insert Code
42X3.0 / Pipe O. D. X wall thickness (mm)

Flange connection/Sealing system	
TFV	Tube to port connection, F37 seal version
TFB	Tube to port connection, Bonded seal version
TT	Tube to tube connection
TF	Tube to flange connection, Flat face version

Material and coating	
CF	Steel, Cr(VI)-free
CFTZN	Steel, Hot dip galvanized (only Flanges)
SS	Stainless Steel

*Code 6164: Flange range related to ISO 6164 Standard
Bolts and nuts are not components of the complete Part code

Combination examples

	Complete Part No.	Component	No.	Code	Material
Standard combination Steel CF	F37-320-42X3.0TFVCF Tube to port (F37 seal) 1 1/4" SAE 3000 Flare Flange	Flare Flange	1	F37-320-CFX	Steel, Cr(VI)-free
		Insert incl. O-Ring and F37 Seal	1	IN20-42X3.0TFVCF	Steel, Cr(VI)-free
		O-Ring	1	OR37.82X1.78X	NBR, 90° shore
		F37 Seal	1	F37S20X	PUR
Stainless Steel	F37-620-38X4.0TFVSS Tube to port (F37 seal) 1 1/4" SAE 6000 Flare Flange, 38 mm OD tube Jump size	Flare Flange	1	F37-620-SSX	Stainless Steel
		Insert incl. O-Ring and F37 seal	1	IN20-38X4.0TFVSS	Stainless Steel
		O-Ring	1	OR30X1.0X	NBR, 90° Shore
		F37 seal	1	F37S20X	PUR
		Sleeve	1	SL20-42-38-SSX	Stainless steel
Hot. dip galv. Flange and Stainless Steel Insert	F37-620-38X4.0TFVSSTZN Tube to port (F37 seal) 1 1/4" SAE 6000 Flare Flange, 38 mm OD tube Jump size	Flare Flange	1	F37-620-TZN	Hot dip galv.
		Insert incl. O-Ring and F37 seal	1	IN20-38X4.0TFVSS	Stainless steel
		O-Ring	1	OR30X1.0X	NBR, 90° Shore
		F37 seal	1	F37S20X	PUR
		Sleeve	1	SL20-42-38-SSX	Stainless steel



Parflange® Retaining Ring Code Key

Retaining Ring Examples:

R-1	32	WA	-60.3X2.9	S
-----	----	----	-----------	---

Part code	Flange Type	Flange code	Footprint
F37		1	ISO 6162-1 SAE 1000
F37		3	ISO 6162-1 SAE 3000
F37		6	ISO 6162-2 SAE 6000
F37		4	ISO 6164
R		1	ISO 6162-1 SAE 1000
R		3	ISO 6162-1 SAE 3000
R		6	ISO 6162-2 SAE 6000
R		4	ISO 6164 4 Bolt Flange
R		8	*Code 6164 8-12 Bolt Flange

Size Code												
8	12	16	20	24	32	40	48	64	80	96	128	160
1/2"	3/4"	1"	1 1/4"	1 1/2"	2"	2 1/2"	3"	4"	5"	6"	8"	10"

Weld adapter

Pipe size and Insert Code

60.3X2.9/Pipe O. D. X wall thickness (mm)

Material and coating

S Weld Adapter O-Ring Sealing by SAE 1000 (other footprints bonded seal), Steel
 FS Weld Adapter Flat, Steel
 SS Weld Adapter O-Ring sealing, Stainless Steel
 FSS Weld Adapter Flat, Stainless Steel
 SSTZN Weld Adapter O-Ring sealing, Stainless Steel and hot dip galv. Flange
 FSSTZN Weld Adapter Flat, Stainless Steel and hot dip galv. Flange

*Code 6164: Flange range related to ISO 6164 Standard
 Bolts and nuts are not components of the complete Part code

Combination examples

	Complete Part No.	Component	No.	Code	Material
Standard combination Steel CF	R-132WA-60.3X2.9S SAE 1000 Retaining Ring Weld Adapter	Retaining Ring Flange	1	R-132-CFX	Steel, Cr(VI)-free
		Retaining Ring		R32X	Stainless Steel
		Weld Adapter body O-Ring	1	WA132-60.3X2.9S OR56.75X3.53X	Steel, Cr(VI)-free NBR, 90° Shore
Stainless Steel	R-620WA-38X4.0SS SAE 6000 Retaining Ring Weld Adapter	Retaining Ring Flange	1	R-620-SSX	Stainless Steel
		Retaining Ring	1	R20X	Stainless Steel
		Weld Adapter body	1	WA20-38X4.0SSX	Stainless Steel
		Bonded seal	1	BS20SSNX	NBR, 90° Shore
Stainless Steel	R-PSC8128-250X25VSS SAE 6000 8" Retaining Ring and Pipe seal carrier, 250 mm OD tube	Retaining Ring Flange	1	R-8128-SSX	Stainless Steel
		Retaining Ring	1	R128X	Stainless Steel
		Pipe seal carrier incl. F37 seal	1	PSC128-250X25VSSX	Stainless Steel
		F37 seal	1	F37128X	PUR