

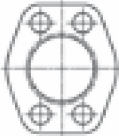



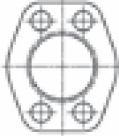


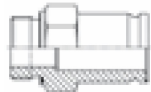


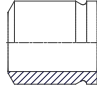


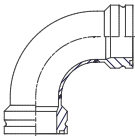
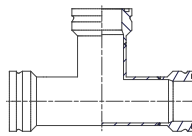
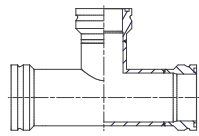
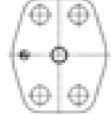
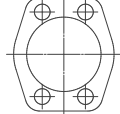
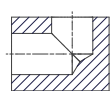
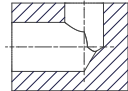
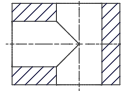
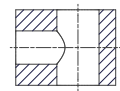



SAE 1000 System

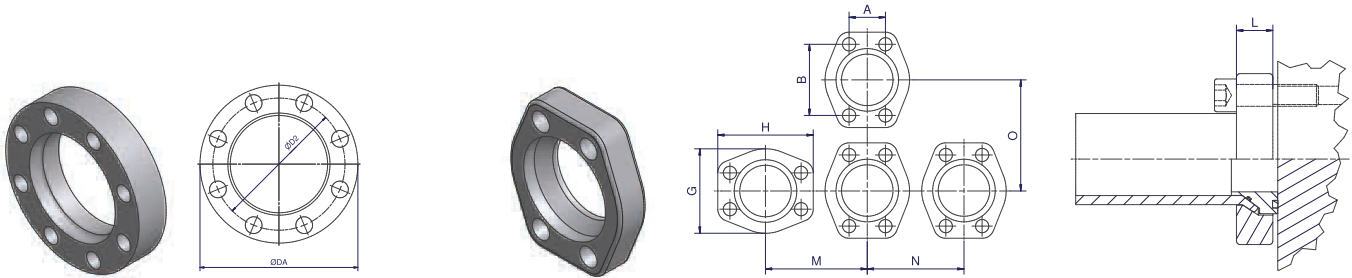
50 – 70 bar

ENGINEERING YOUR SUCCESS.

Programme overview SAE 1000/ISO 6162-1 footprint

Parflange® F37 connection parts	Flanges  F37 – p.49					
	Inserts    TFV – p.51 TF – p.52 TT – p.53					
	Retaining ring connection parts					
SAE connection parts	Flanges    R – p.50 R-Ring – p.54 R – p.50					
	Male / Female   MTF-R – p.55 FTF-R – p.56			Weld   WA – p.57 WA-F – p.58		
	Tube to Tube      BF – p.59/60 RF – p.61/62 LF – p.63/64 TF – p.65/66 TF-R – p.65/66					
	Blind Flanges   BFV – p.67 CPML – p.68		Blocks see SAE 3000     LB LBR TB TBR			
	Seals Adapter Bolts  p.69					

F37 – Flare flange | SAE 1000/ISO 6162-1 footprint

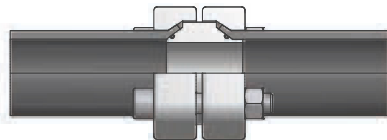


Parflange F37 flange dimensions

Size Inch	Flange Order Code	A	B	G	H	M	N	O	L	Bolts/pc.	Weight (Steel) kg/1 piece	W.P. bar
1 1/2	F37-124-CFX	35.7	69.9	83	93.75	90	85	96	20	4	0.52	70
2	F37-132-CFX	42.9	77.8	97	101.60	102	99	104	25	4	0.83	70
2 1/2	F37-140-CFX	50.8	88.9	109	114.30	114	111	117	30	4	1.16	70
3	F37-148-CFX	61.9	106.4	131	135.50	136	133	137	30	4	1.57	70
3 1/2	F37-156-CFX	69.9	120.7	140	152.40	148	142	155	30	4	1.99	70
4	F37-164-CFX	77.8	130.2	152	161.95	160	155	164	39	4	2.69	70
5	F37-180-CFX	92.1	152.4	181	184.15	186	184	185	39	4	3.24	70
		D2	DA									
6	F37-196-CFX	208.0	236.0						39	6	5.60	50

Please change suffixes according to material/surface required

Order code suffixes			
Material	Suffix surface and material	Example	Comments
Steel, zinc plated, Cr(VI)-free	CF	F37-320-CFX	
Stainless steel	SS	F37-320-SSX	
Galvanized hot dip zinc	TZN	F37-320-TZNX	on request



Part combination flaring SAE 1000

Flange Pressure (bar)	Size Inch	Pipe Size	Flange 1000 SAE ISO 6162-1 footprint	Insert*	O-Ring Insert	Bolts Tube to Port	Bolts Tube to Tube	Nut
70	1 1/2	50X3.0	F37-124-CFX	IN24-50X3.0T...	OR47.22X3.53	4 x ZYLS12X40	4 x ZYLS12X70	4 x ISO4032-M12
	2	60X3.0	F37-132-CFX	IN32-60X3.0T...	OR56.75X3.53	4 x ZYLS12X45	4 x ZYLS12X80	4 x ISO4032-M12
	2 1/2	75X3.0	F37-140-CFX	IN40-75X3.0T...	OR69.44X3.53	4 x ZYLS12X50	4 x ZYLS12X90	4 x ISO4032-M12
	3	88.9X3.05	F37-14888.9-CFX	IN48-88.9X3.05T...	OR85.32X3.53	4 x ZYLS16X60	4 x ZYLS16X100	4 x ISO4032-M16
	3	90X3.5	F37-148-CFX	IN48-90X3.5T...	OR85.32X3.53	4 x ZYLS16X60	4 x ZYLS16X100	4 x ISO4032-M16
	3 1/2	100X4.0	F37-156-CFX	IN56-100X4.0T...	OR98.02X3.53	4 x ZYLS16X55	4 x ZYLS16X100	4 x ISO4032-M16
50	4	115X4.0	F37-164-CFX	IN64-115X4.0T...	OR110.72X3.53	4 x ZYLS16X65	4 x ZYLS16X120	4 x ISO4032-M16
	5	140X4.5	F37-180-CFX	IN80-140X4.5T...	OR136.12X3.53	4 x ZYLS16X65	4 x ZYLS16X120	4 x ISO4032-M16
	6	165X5.0	F37-196-CFX	IN96-165X5.0T...	OR158.34X3.53	6 x ZYLS16X65	6 x ZYLS16X110	6 x ISO4032-M16

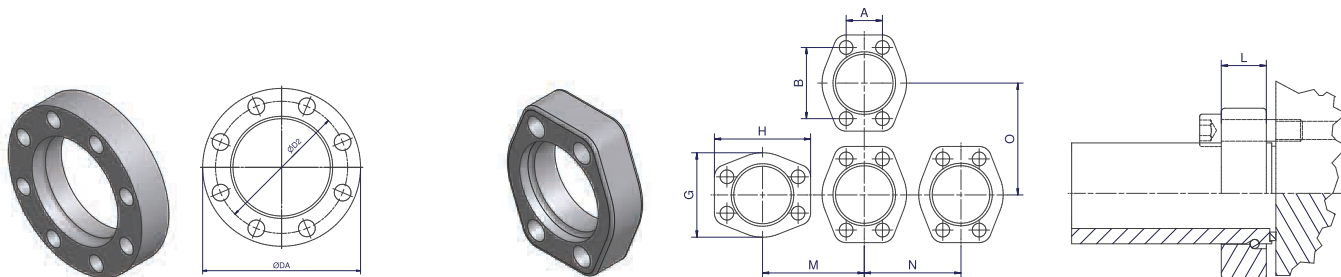
Select the complete version:

- * ...FVCF Seal version
- ...TCF Tube to Tube version
- ...FCF Flat Face version

Pressure rates related to flanges | Bolt and nuts for flanges see page 67 | Other sizes on request

R – Retaining ring flange | SAE 1000/ISO 6162-1 footprint

SAE 1000/ISO 6162-1 footprint

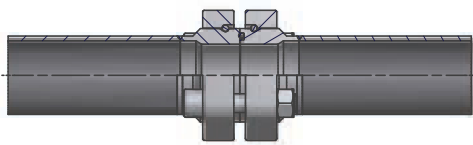


Retaining Ring Flange dimensions

Size Inch	Flange Order code	A	B	G	H	M	N	O	L	Bolts/pc.	Weight (Steel) kg/1 piece	W.P. bar
1 1/2	R-124-CFX	35.7	69.9	83	93.75	90	85	96	20	4	0.46	70
2	R-132-CFX	42.9	77.8	97	101.60	102	99	104	20	4	0.57	70
2 1/2	R-140-CFX	50.8	88.9	109	114.30	114	111	117	20	4	0.70	70
3	R-148-CFX	61.9	106.4	131	135.50	136	133	137	25	4	1.18	70
3 1/2	R-156-CFX	69.9	120.7	140	152.40	148	142	155	29	4	1.47	70
4	R-164-CFX	77.8	130.2	152	161.95	160	155	164	30	4	1.74	70
5	R-180-CFX	92.1	152.4	181	184.15	185	183	186	39	4	2.81	70
		D2	DA									
6	R-196-CFX	208	235.5						39	6	4.96	70
8	R-1128-CFX	275	318.0						38	8	8.95	50
10	R-1160-CFX	345	409.6						50	8	23.29	50

Please change suffixes according to material/surface required

Order code suffixes		
Material	Suffix surface and material	Example
Steel, zinc plated, Cr(VI)-free	CF	R-124-CFX
Stainless steel	SS	R-124-SSX
Galvanized hot dip zinc	TZN	R-124-TZN



Part combination retaining ring SAE 1000 (O-Ring) connection

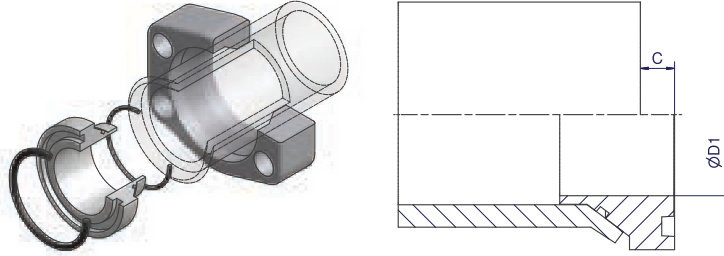
Flange pressure (bar)	Size Inch	Flange	Retaining Ring	O-Ring	Bolts Tube to Port	Bolts Tube to Tube	Nut
70	1 1/2	R-124-CFX	R124X	OR47.22X3.53X	4 x ZYLS12X40	4 x ZYLS12X65	4 x ISO4032-M12
	2	R-132-CFX	R132X	OR56.75X3.53X	4 x ZYLS12X40	4 x ZYLS12X65	4 x ISO4032-M12
	2 1/2	R-140-CFX	R140X	OR69.44X3.53X	4 x ZYLS12X40	4 x ZYLS12X65	4 x ISO4032-M12
	3	R-148-CFX	R148X	OR85.32x3.53X	4 x ZYLS16X50	4 x ZYLS16X80	4 x ISO4032-M16
	3 1/2	R-156-CFX	R156X	OR98.02X3.53X	4 x ZYLS16X55	4 x ZYLS16X90	4 x ISO4032-M16
	4	R-164-CFX	R164X	OR110.72X3.53X	4 x ZYLS16X55	4 x ZYLS16X90	4 x ISO4032-M16
	5	R-180-CFX	R180X	OR136.12X3.53X	4 x ZYLS16X70	4 x ZYLS16X110	4 x ISO4032-M16
50	6	R-196-CFX	R196X	OR158.34X3.53X	6 x ZYLS16X70	6 x ZYLS16X110	6 x ISO4032-M16
	8	R-1128-CFX	R1128X	OR219.3X5.7X	8 x ZYLS20X70	8 x ZYLS20X120	8 x ISO4032-M20
	10	R-1160-CFX	R1160X	OR269.3X5.7X	8 x ZYLS20X80	8 x ZYLS20X150	8 x ISO4032-M20

* Use only for weld adapter and T- and L-adapter flanges | Bolts and nuts are not included in a complete part



TFV – Flare flange connection

Tube to port connection



Size Inch	Tube	Flange incl. Insert F37 Seal + O-Ring Order code	D1	C	Insert incl. 2 x O-Ring Order code	O-Ring Tube Side Order code	O-Ring Seal Port Side Order code	Weight (Steel) kg/1 piece
1 1/2	50X3.0	F37-124-50X3.0TFVCF	36.0	11	IN24-50X3.0TFVCF	OR44.17X1.78X	OR47.22X3.53	0.72
2	60X3.0	F37-132-60X3.0TFVCF	46.0	12	IN32-60X3.0TFVCF	OR53.7X1.78X	OR56.75X3.53	1.10
2 1/2	75X3.0	F37-140-75X3.0TFVCF	60.0	10	IN40-75X3.0TFVCF	OR69.57X1.78X	OR69.44X3.53	1.46
3	90X3.5	F37-148-90X3.5TFVCF	72.0	15	IN48-90X3.5TFVCF	OR82.27X1.78X	OR85.32X3.53	2.17
3 1/2	100x4.0	F37-156-100X4.0TFVCF	88.6	15	IN56-100X4.0TFVCF	OR98.02X3.53	OR98.02X3.53	2.60
4	115X4.0	F37-164-115X4.0TFVCF	90.0	14	IN64-115X4.0TFVCF	OR110X2X	OR110.72X3.53	3.53
5	140X4.5	F37-180-140X4.5TFVCF	122.0	15	IN80-140X4.5TFVCF	OR129.77X3.53	OR136.12X3.53	4.09
6	165X5.0	F37-196-165X5.0TFVCF	150.8	17	IN96-165X5.0TFVCF	OR158.42X6.26X	OR158.34X3.53	6.98

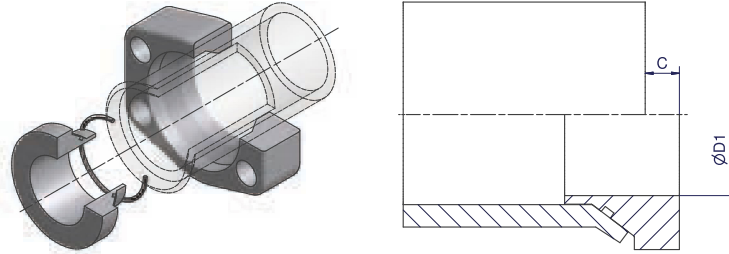
Other sizes on request

Please change suffixes according to material/surface required

Order code suffixes		
Material	Suffix surface and material	Example
Steel, zinc plated, Cr(VI)-free	CF	F37-124-50X3.0TFVCF
Stainless steel	SS	F37-124-50X3.0TFVSS

TF – Flare flange connection

Tube to port connection, flat face



Size Inch	Tube	Flange incl. Insert + O-Ring Order code	D1	C	Insert incl. O-Ring Order code	O-Ring Tube Side Order code	Weight (Steel) kg/1 piece
1 1/2	50X3.0	F37-124-50X3.0TFCF	36.0	11	IN24-50X3.0TFCF	OR44.17X1.78X	0.72
2	60X3.0	F37-132-60X3.0TFCF	46.0	12	IN32-60X3.0TFCF	OR53.7X1.78X	1.10
2 1/2	75X3.0	F37-140-75X3.0TFCF	60.0	10	IN40-75X3.0TFCF	OR69.57X1.78X	1.46
3	90X3.5	F37-148-90X3.5TFCF	72.0	15	IN48-90X3.5TFCF	OR82.27X1.78X	2.17
3 1/2	100X4.0	F37-156-100X4.0TFCF	88.6	15	IN56-100X4.0TFCF	OR98.02X3.53X	2.60
4	115X4.0	F37-164-115X4.0TFCF	90.0	14	IN64-115X4.0TFCF	OR110X2X	3.60
5	140X4.5	F37-180-140X4.5TFCF	122.0	15	IN80-140X4.5TFCF	OR129.77X3.53X	4.14
6	165X5.0	F37-196-165X5.0TFCF	150.8	17	IN96-165X5.0TFCF	OR158.42X6.26X	7.03

Other sizes on request

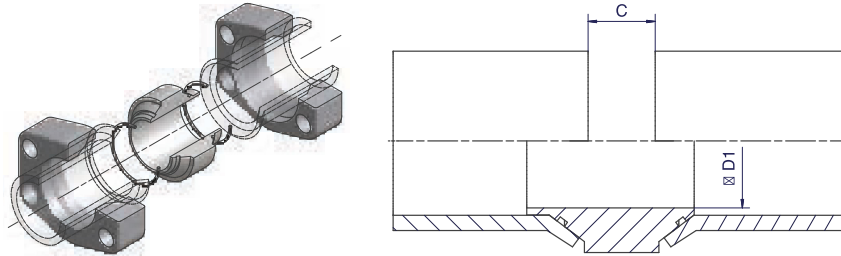
Please change suffixes according to material/surface required

Order code suffixes		
Material	Suffix surface and material	Example
Steel, zinc plated, Cr(VI)-free	CF	IN24-50X3.0TFCF
Stainless steel	SS	IN24-50X3.0TFSS



TT – Flare flange connection

Tube to tube connection



Size Inch	Tube	Flange incl. Insert + 2 x O-Ring Order code	D1	C	Insert incl. 2 x O-Ring Order code	O-Ring Tube Side Order code	Weight (Steel) kg/1 piece
1 1/2	50X3.0	F37-124-50X3.0TTCF	36.0	22	IN24-50X3.0TTCF	OR44.17X1.78X	0.94
2	60X3.0	F37-132-60X3.0TTCF	46.0	24	IN32-60X3.0TTCF	OR53.7X1.78X	1.38
2 1/2	75X3.0	F37-140-75X3.0TTCF	60.0	20	IN40-75X3.0TTCF	OR69.57X1.78X	1.79
3	90X3.5	F37-148-90X3.5TTCF	72.0	30	IN48-90X3.5TTCF	OR82.27X1.78X	2.79
3 1/2	100X4.0	F37-156-100X4.0TTCF	88.6	30	IN56-100X4.0TTCF	OR98.02X3.53X	2.60
4	115X4.0	F37-164-115X4.0TTCF	90.0	28	IN64-115X4.0TTCF	OR110X2X	4.45
5	140X4.5	F37-180-140X4.5TTCF	122.0	30	IN80-140X4.5TTCF	OR129.77X3.53X	4.75
6	165X5.0	F37-196-165X5.0TTCF	150.8	34	IN96-165X5.0TTCF	OR158.42X6.26X	8.36

Other sizes on request

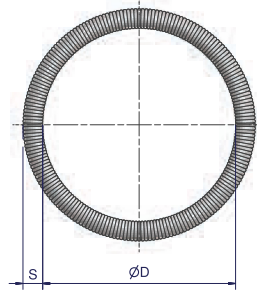
Please change suffixes according to material/surface required

Order code suffixes		
Material	Suffix surface and material	Example
Steel, zinc plated, Cr(VI)-free	CF	F37-124-50X3.0TTCF
Stainless Steel	SS	F37-124-50X3.0TTSS

R – Retaining ring

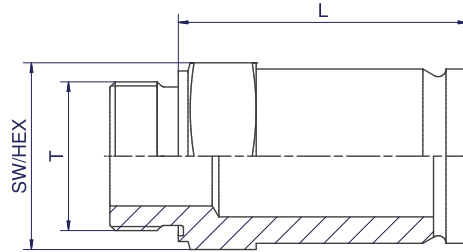
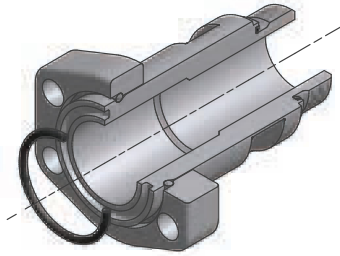
SAE 1000/ISO 6162-1 footprint

Size Inch	D	S	Order code
1 1/2	56.0	4.0	R124X
2	66.0	4.0	R132X
2 1/2	77.0	4.0	R140X
3	93.0	5.0	R148X
3 1/2	110.0	5.0	R156X
4	120.0	5.0	R164X
5	144.0	6.0	R180X
6	174.0	6.0	R196X
8	232.0	8.0	R1128X
10	286.0	8.0	R1160X



MTF-R – Male thread adapter, BSPP

SAE 1000/ISO 6162-1 footprint



Size Inch	Complete part Order code	Body incl. ED/Seal Order code	Weight body (Steel) kg/1 piece	L	T	SW/ HEX
1 1/2	R-124MTFRCF	MTF124ROMDCF	1.23	96	G 1 1/2 A	50
1 1/2	R-124MTFR11/4CF	MTF124R11/4OMDCF	1.32	96	G 1 1/4 A	50
2	R-132MTFR2CF	MTF132R2OMDCF	1.83	97	G 2 A	60
2	R-132MTFR11/2CF	MTF132R11/2OMDCF	1.72	99	G 1 1/2 A	60
2 1/2	R-140MTFR2CF	MTF140R2OMDCF	2.31	97	G 2 A	70
2 1/2	R-140MTFRCF	MTF140ROMDCF	2.31	95	G 2 1/2 A	70
3	R-148MTFR21/2CF	MTF148R21/2OMDCF	3.79	120	G 2 1/2 A	85
3	R-148MTFRCF	MTF148ROMDCF	3.80	118	G 3 A	85

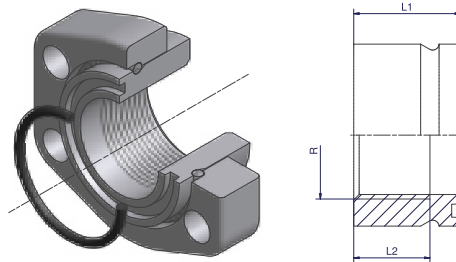
Other sizes on request

Please change suffixes according to material/surface required

Order code suffixes		
Material	Suffix surface and material	Example
Steel, zinc plated, Cr(VI)-free	CF	R-120MTFR1CF
Stainless steel	SS	R-120MTFR1SS

FTF-R – Female thread adapter, BSPP

SAE 1000/ISO 6162-1 footprint



Size Inch	Complete part Order code	Adapter Order code	Weight (Steel) kg/1 piece	L1	L2	R
1 1/2	R-124FTFR11/4CF	FTF124R11/4CFX	0.45	45	30	G 1 1/4
2	R-132FTFR11/2CF	FTF132R11/2CFX	0.75	55	40	G 1 1/2
2 1/2	R-140FTFR2CF	FTF140R2CFX	1.52	80	40	G 2
3	R-148FTFR21/2CF	FTF148R21/2CFX	2.11	85	50	G 2 1/2

Other sizes on request

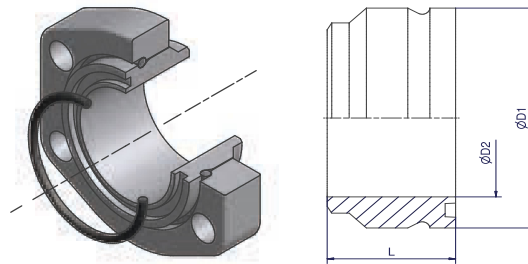
Please change suffixes according to material/surface required

Order code suffixes		
Material	Suffix surface and material	Example
Steel, zinc plated, Cr(VI)-free	CF	R-120FTFR1CF
Stainless steel	SS	R-120FTFR1SS



WA – Weld adapter connection

SAE 1000/ISO 6162-1 footprint



Size Inch	Tube	Complete Part Order code	Weld Adapter Body Order code	Flange Order code	Retaining Ring	O-Ring	Weight (Steel) kg/1 piece	D1	D2	L
1 1/2	50.0x3.0	R-124WA-50x3.0S	WA124-50x3.0SX	R-124-CFX	R124X	OR47.22X3.53X	0.80	59.7	39.8	35.0
1 1/2	48.3X2.6	R-124WA-48.3X2.6S	WA124-48.3X2.6SX	R-124-CFX	R124X	OR47.22X3.53X	0.80	59.7	39.8	35.0
2	60.0X3.0	R-132WA-60x3.0S	WA132-60X3.0SX	R-132-CFX	R132X	OR56.75X3.53X	0.99	69.7	50.0	35.0
2	60.3X2.9	R-132WA-60.3X2.9S	WA132-60.3X2.9SX	R-132-CFX	R132X	OR56.75X3.53X	0.99	69.7	50.0	35.0
2 1/2	75.0x3.0	R-140WA-75x3.0S	WA140-75x3.0SX	R-140-CFX	R140X	OR69.44X3.53X	1.21	80.7	62.0	35.0
2 1/2	76.1X3.2	R-140WA-76.1X3.2S	WA140-76.1X3.2SX	R-140-CFX	R140X	OR69.44X3.53X	1.21	80.7	62.0	35.0
3	88.9X3.05	R-148WA-88.9X3.05S	WA148-88.9X3.05SX	R-148-CFX	R148X	OR85.32X3.53X	1.92	97.7	77.8	40.0
3	88.9X3.6	R-148WA-88.9X3.6S	WA148-88.9X3.6SX	R-148-CFX	R148X	OR85.32X3.53X	1.92	97.7	77.8	40.0
3 1/2	100X4.0	R-156WA-100X4.0S	WA156-100X4.0SX	R-156-CFX	R156X	OR98.02X3.53X	2.70	114.7	89.8	40.0
4	114.3X4.5	R-164WA-114.3X4.5S	WA164-114.3X4.5SX	R-164-CFX	R164X	OR110.72X3.53X	3.11	124.7	99.8	40.0
4	115X4.0	R-164WA-115X4.0S	WA164-115X4.0SX	R-164-CFX	R164X	OR110.72X3.53X	3.09	124.7	99.8	40.0
5	139.7X5.6	R-180WA-139.7X5.6S	WA180-139.7X5.6SX	R-180-CFX	R180X	OR136.12X3.53X	4.92	149.7	124.8	45.0
5	140x4.5	R-180WA-140x4.5S	WA180-140x4.5SX	R-180-CFX	R180X	OR136.12X3.53X	4.87	149.7	124.8	45.0
5	141.3X3.4	R-180WA-141.3X3.4S	WA180-141.3X3.4SX	R-180-CFX	R180X	OR136.12X3.53X	4.91	149.7	124.8	45.0
6	165x5.0	R-196WA-165x5.0S	WA196-165x5.0SX	R-196-CFX	R196X	OR158.34X3.53X	8.02	179.7	149.8	50.0
6	168.3X2.77	R-196WA-168.3X2.77S	WA196-168.3X2.77SX	R-196-CFX	R196X	OR158.34X3.53X	8.06	179.7	149.8	50.0
6	168.3X3.4	R-196WA-168.3X3.4S	WA196-168.3X3.4SX	R-196-CFX	R196X	OR158.34X3.53X	8.06	179.7	149.8	50.0
8	219.1X3.76	R-1128WA-219.1X3.76S	WA1128-219.1X3.76SX	R-1128-CFX	R1128X	OR219.3X5.7X	13.55	239.7	206.5	60.0
8	219.1X8.18	R-1128WA-219.1X8.18S	WA1128-219.1X8.18SX	R-1128-CFX	R1128X	OR219.3X5.7X	13.55	239.7	206.5	60.0
8	220X6.0	R-1128WA-220X6.0S	WA1128-220X6.0SX	R-1128-CFX	R1128X	OR219.3X5.7X	13.62	239.7	208.0	60.0
10	273X6.0	R-1160WA-273X6S	WA1160-273X6SX	R-1160-CFX	R1160X	OR269.3X5.7X	32.23	295.0	255.0	70.0
10	274.1X9.27	R-1160WA-274.1X9.27S	WA1160-274.1X9.27SX	R-1160-CFX	R1160X	OR269.3X5.7X	32.39	295.0	255.0	70.0

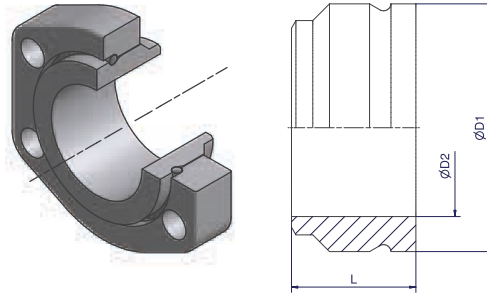
Other sizes on request

Please change suffixes according to material/surface required

Order code suffixes		
Material	Suffix surface and material	Example
Steel	S	R-124WA-50x3.0S
Stainless steel	SS	R-124WA-50x3.0SS

WAF – Weld adapter flat connection

SAE 1000/ISO 6162-1 footprint



Size Inch	Tube	Complete Part Order code	Weld Adapter Body Order code	Flange Order code	Retaining Ring	Weight (Steel) kg/1 piece	D1	D2	L
1 1/2	50.0x3.0	R-124WA-50x3.0FS	WA124-50x3.0FSX	R-124-CFX	R124X	0.80	59.7	39.8	35.0
1 1/2	48.3X2.6	R-124WA-48.3X2.6FS	WA124-48.3X2.6FSX	R-124-CFX	R124X	0.80	59.7	39.8	35.0
2	60.0X3.0	R-132WA-60x3.0FS	WA132-60X3.0FSX	R-132-CFX	R132X	0.99	69.7	50.0	35.0
2	60.3X2.9	R-132WA-60.3X2.9FS	WA132-60.3X2.9FSX	R-132-CFX	R132X	1.01	69.7	50.0	35.0
2 1/2	75.0x3.0	R-140WA-75x3.0FS	WA140-75.0x3.0FSX	R-140-CFX	R140X	1.21	80.7	62.0	35.0
2 1/2	76.1X3.2	R-140WA-76.1X3.2FS	WA140-76.1X3.2FSX	R-140-CFX	R140X	1.21	80.7	62.0	35.0
3	88.9X3.05	R-148WA-88.9X3.05FS	WA148-88.9X3.05FSX	R-148-CFX	R148X	1.94	97.7	77.8	40.0
3	88.9X3.6	R-148WA-88.9X3.6FS	WA148-88.9X3.6FSX	R-148-CFX	R148X	1.94	97.7	77.8	40.0
3 1/2	100X4.0	R-156WA-100X4.0FS	WA156-100X4.0FSX	R-156-CFX	R156X	2.73	114.7	89.8	40.0
4	114.3X4.5	R-164WA-114.3X4.5FS	WA164-114.3X4.5FSX	R-164-CFX	R164X	3.15	124.7	99.8	40.0
4	115X4.0	R-164WA-115X4.0FS	WA164-115X4.0FSX	R-164-CFX	R164X	3.13	124.7	99.8	40.0
5	139.7X5.6	R-180WA-139.7X5.6FS	WA180-139.7X5.6FSX	R-180-CFX	R180X	4.96	149.7	124.8	45.0
5	140x4.5	R-180WA-140x4.5FS	WA180-140x4.5FSX	R-180-CFX	R180X	4.92	149.7	124.8	45.0
5	141.3X3.4	R-180WA-141.3X3.4FS	WA180-141.3X3.4FSX	R-180-CFX	R180X	4.93	149.7	124.8	45.0
6	165x5.0	R-196WA-165x5.0FS	WA196-165x5.0FSX	R-196-CFX	R196X	8.08	179.7	149.8	50.0
6	168.3X2.77	R-196WA-168.3X2.77FS	WA196-168.3X2.77FSX	R-196-CFX	R196X	8.16	179.7	149.8	50.0
6	168.3X3.4	R-196WA-168.3X3.4FS	WA196-168.3X3.4FSX	R-196-CFX	R196X	8.16	179.7	149.8	50.0
8	219.1X3.76	R-1128WA-219.1X3.76FS	WA1128-219.1X3.76FSX	R-1128-CFX	R1128X	13.75	239.7	206.5	60.0
8	219.1X8.18	R-1128WA-219.1X8.18FS	WA1128-219.1X8.18FSX	R-1128-CFX	R1128X	13.75	239.7	206.5	60.0
8	220X6.0	R-1128WA-220X6.0FS	WA1128-220X6.0FSX	R-1128-CFX	R1128X	13.81	239.7	208.0	60.0
10	273X6.0	R-1160WA-273X6.0FS	WA1160-273X6.0FSX	R-1160-CFX	R1160X	32.47	295.0	255.0	70.0
10	274.1X9.27	R-1160WA-274.1X9.27FS	WA1160-274.1X9.27FSX	R-1160-CFX	R1160X	32.49	295.0	255.0	70.0

Other sizes on request

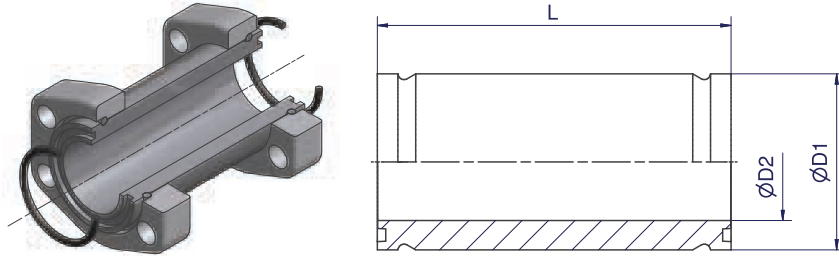
Please change suffixes according to material/surface required

Order code suffixes		
Material	Suffix surface and material	Example
Steel	S	R-124WA-50x3.0FS
Stainless steel	SS	R-124WA-50x3.0FSS



BF – Bulkhead flange

SAE 1000/ISO 6162-1 footprint



Size Inch	Complete Part Order code	Bulkhead Body Order code	O-Ring	Weight body kg/1 piece	D1	D2	L
2	R-132LBFS	BF132SX	OR56.75X3.53X	2.34	69.7	50.0	165
2 1/2	R-140LBFS	BF140SX	OR69.44X3.53X	2.81	80.7	62.0	175
3	R-148LBFS	BF148SX	OR85.32X3.53X	4.20	97.7	77.8	200
3 1/2	R-156LBFS	BF156SX	OR98.02X3.53X	6.15	114.7	89.8	200
4	R-164LBFS	BF164SX	OR110.72X3.53X	6.75	124.7	99.8	200
5	R-180LBFS	BF180SX	OR136.12X3.53X	8.22	149.7	124.8	200
6	R-196LBFS	BF196SX	OR158.34X3.53X	12.81	179.7	149.8	215
8	R-1128LBFS	BF1128SX	OR219.3X5.7X	21.18	239.7	206.5	240

Other sizes on request

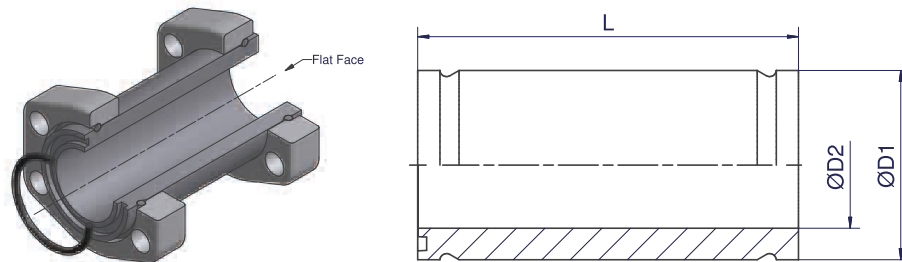
Please change suffixes according to material/surface required

Order code suffixes		
Material	Suffix surface and material	Example
Steel	S	R-132BFS
Stainless steel	SS	R-132BFSS

Parflange® F37 – SAE 1000/ISO 6162-1 footprint

BF – Bulkhead flange flat face

SAE 1000/ISO 6162-1 footprint



Size Inch	Complete Part Order code	Bulkhead Body Order code	O-Ring	Weight body kg/1 piece	D1	D2	L
2	R-132FBFS	BF132FSX	OR56.75X3.53X	2.34	69.7	50.0	165
2 1/2	R-140FBFS	BF140FSX	OR69.44X3.53X	2.81	80.7	62.0	175
3	R-148FBFS	BF148FSX	OR85.32X3.53X	4.20	97.7	77.8	200
3 1/2	R-156FBFS	BF156FSX	OR98.02X3.53X	6.15	114.7	89.8	200
4	R-164FBFS	BF164FSX	OR110.72X3.53X	6.75	124.7	99.8	200
5	R-180FBFS	BF180FSX	OR136.12X3.53X	8.22	149.7	124.8	200
6	R-196FBFS	BF196FSX	OR158.34X3.53X	12.81	179.7	149.8	215
8	R-1128FBFS	BF1128FSX	OR219.3X5.7X	21.18	239.7	206.5	240

Other sizes on request

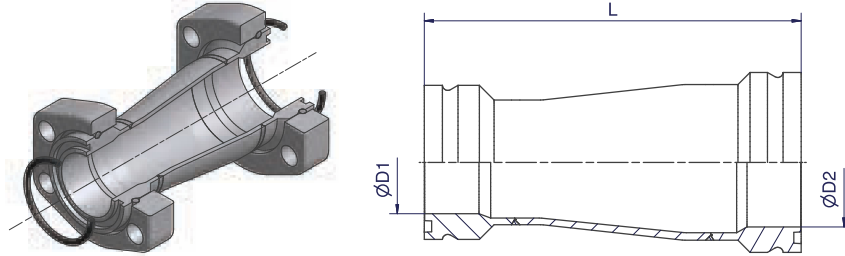
Please change suffixes according to material/surface required

Order code suffixes		
Material	Suffix surface and material	Example
Steel	S	R-132BFS
Stainless steel	SS	R-132BFSS



RF – Reducer flange

SAE 1000/ISO 6162-1 footprint



Size Inch	Complete Part Order code	Reducer Body Order code	O-Ring D1	O-Ring D2	D1	D2	L	Weight (Steel) kg/1 piece	W.P.
2 - 1 1/2	R-132-124LRFCF	RF132-124LOMDCF	OR56.75X3.53X	OR47.22X3.53X	48.3	60.3	146	0.91	70
2 1/2 - 1 1/2	R-140-124LRFCF	RF140-124LOMDCF	OR69.44X3.53X	OR47.22X3.53X	48.3	76.1	160	1.04	70
2 1/2 - 2	R-140-132LRFCF	RF140-132LOMDCF	OR69.44X3.53X	OR56.75X3.53X	60.3	76.1	160	1.25	70
3 - 1 1/2	R-148-124LRFCF	RF148-124LOMDCF	OR85.32X3.53X	OR47.22X3.53X	48.3	88.9	165	1.34	70
3 - 2	R-148-132LRFCF	RF148-132LOMDCF	OR85.32X3.53X	OR56.75X3.53X	60.3	88.9	165	1.45	70
3 - 2 1/2	R-148-140LRFCF	RF148-140LOMDCF	OR85.32X3.53X	OR69.44X3.53X	76.1	88.9	168	1.53	70
3 1/2 - 2 1/2	R-156-140LRFCF	RF156-140LOMDCF	OR98.02X3.53X	OR69.44X3.53X	79.1	108.0	177	2.00	50
3 1/2 - 3	R-156-148LRFCF	RF156-148LOMDCF	OR98.02X3.53X	OR85.32X3.53X	88.9	108.0	182	2.32	50
4 - 3	R-164-148LRFCF	RF164-148LOMDCF	OR110.72X3.53X	OR85.32X3.53X	88.9	114.3	182	2.43	50
5 - 4	R-180-164LRFCF	RF180-164LOMDCF	OR136.12X3.53X	OR110.72X3.53X	114.3	139.7	214	3.86	50

Other sizes on request

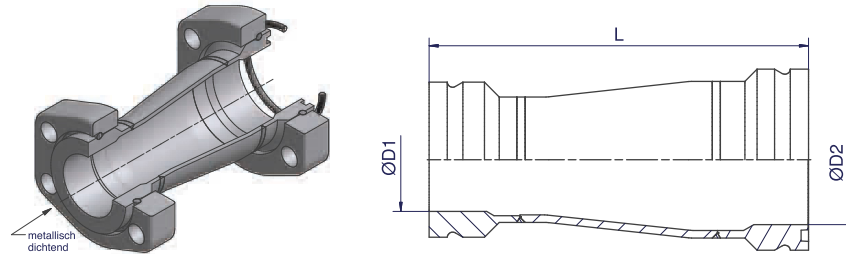
Please change suffixes according to material/surface required

Order code suffixes		
Material	Suffix surface and material	Example
Steel, zinc plated, Cr(VI)-free	CF	RF-132-124-LRFCF
Stainless steel	SS	RF-132-124-LRFSS

Parflange® F37 – SAE 1000/ISO 6162-1 footprint

RF – Reducer flange flat face

SAE 1000/ISO 6162-1 footprint



Size Inch	Complete Part Order code	Reducer Body Order code	O-Ring	D1	D2	L	Weight (Steel) kg/1 piece	W.P.
2 - 1 1/2	R-132-124FRFCF	RF132-124FOMDCF	OR56.75X3.53X	48.3	60.3	146	0.91	70
2 1/2 - 1 1/2	R-140-124FRFCF	RF140-124FOMDCF	OR69.44X3.53X	48.3	76.1	160	1.04	70
2 1/2 - 2	R-140-132FRFCF	RF140-132FOMDCF	OR69.44X3.53X	60.3	76.1	160	1.25	70
3 - 1 1/2	R-148-124FRFCF	RF148-124FOMDCF	OR85.32X3.53X	48.3	88.9	165	1.34	70
3 - 2	R-148-132FRFCF	RF148-132FOMDCF	OR85.32X3.53X	60.3	88.9	165	1.45	70
3 - 2 1/2	R-148-140FRFCF	RF148-140FOMDCF	OR85.32X3.53X	76.1	88.9	168	1.53	70
3 1/2 - 2 1/2	R-156-140FRFCF	RF156-140FOMDCF	OR98.02X3.53X	79.1	108.0	177	2.00	50
3 1/2 - 3	R-156-148FRFCF	RF156-148FOMDCF	OR98.02X3.53X	88.9	108.0	182	2.32	50
4 - 3	R-164-148FRFCF	RF164-148FOMDCF	OR110.72X3.53X	88.9	114.3	182	2.43	50
5 - 4	R-180-164FRFCF	RF180-164FOMDCF	OR136.12X3.53X	114.3	139.7	214	3.86	50

Other sizes on request

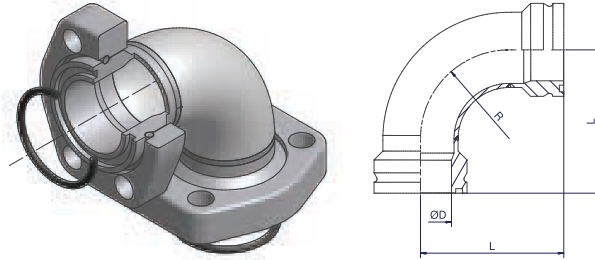
Please change suffixes according to material/surface required

Order code suffixes		
Material	Suffix surface and material	Example
Steel, zinc plated, Cr(VI)-free	CF	RF132-124-FRFCF
Stainless steel	SS	RF132-124-FRFSS



LF – Elbow flange

SAE 1000/ISO 6162-1 footprint



Size Inch	Elbow Flange Complete Part Order code	Elbow Flange body Order code	O-Ring	D	L	R	Weight (Steel) kg/1 piece	W.P.
1 1/2	R-124LLFCF	LF124LOMDCF	OR47.22X3.53X	39.8	94	57.0	0.85	70
2	R-132LLFCF	LF132LOMDCF	OR56.75X3.53X	50.0	112	76.0	1.18	70
2 1/2	R-140LLFCF	LF140LOMDCF	OR69.44X3.53X	62.0	132	95.0	1.54	70
3	R-148LLFCF	LF148LOMDCF	OR85.32X3.53X	77.8	155	114.0	2.44	70
3 1/2	R-156LLFCF	LF156LOMDCF	OR98.02X3.53X	88.9	184	142.5	3.88	50
4	R-164LLFCF	LF164LOMDCF	OR110.72X3.53X	99.8	195	152.0	4.33	50
5	R-180LLFCF	LF180LOMDCF	OR136.12X3.53X	124.8	235	190.0	6.81	50
6	R-196LLFCF	LF196LOMDCF	OR158.34X3.53X	149.8	304	229.0	11.19	50
8	R-1128LLFCF	LF1128LOMDCF	OR219.3X5.7X	206.5	390	305.0	24.13	50
10	R-1160LLFCF	LF1160LOMDCF	OR269.3X5.7X	255.0	471	381.0	38.39	50

Other sizes on request

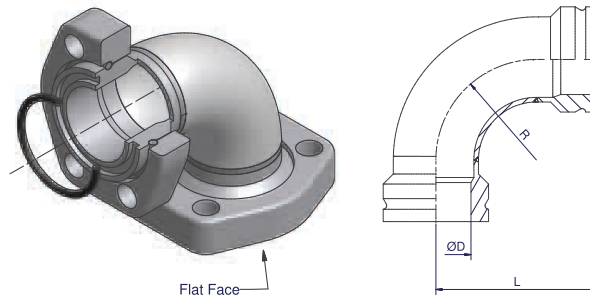
Please change suffixes according to material/surface required

Order code suffixes		
Material	Suffix surface and material	Example
Steel, zinc plated, Cr(VI)-free	CF	R-124LLFCF
Stainless steel	SS	R-124LLFSS

Parflange® F37 – SAE 1000/ISO 6162-1 footprint

LF – Elbow flange flat face

SAE 1000/ISO 6162-1 footprint



Size Inch	Elbow Flange Complete Part Order code	Elbow Flange body Order code	O-Ring	D	L	R	Weight (Steel) kg/1 piece	W.P.
1 1/2	R-124FLFCF	LF124FOMDCF	OR47.22X3.53X	39.8	94	57.0	0.85	70
2	R-132FLFCF	LF132FOMDCF	OR56.75X3.53X	50.0	112	76.0	1.18	70
2 1/2	R-140FLFCF	LF140FOMDCF	OR69.44X3.53X	62.0	132	95.0	1.54	70
3	R-148FLFCF	LF148FOMDCF	OR85.32X3.53X	77.8	155	114.0	2.44	70
3 1/2	R-156FLFCF	LF156FOMDCF	OR98.02X3.53X	88.9	184	142.5	3.88	50
4	R-164FLFCF	LF164FOMDCF	OR110.72X3.53X	99.8	195	152.0	4.33	50
5	R-180FLFCF	LF180FOMDCF	OR136.12X3.53X	124.8	235	190.0	6.81	50
6	R-196FLFCF	LF196FOMDCF	OR158.34X3.53X	149.8	304	229.0	11.19	50
8	R-1128FLFCF	LF1128FOMDCF	OR219.3X5.7X	206.5	390	305.0	24.13	50
10	R-1160FLFCF	LF1160FOMDCF	OR269.3X5.7X	255.0	471	381.0	38.39	50

Other sizes on request

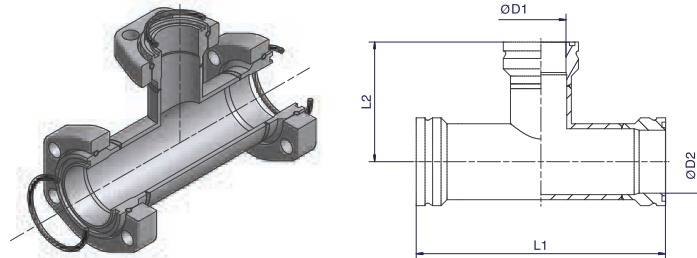
Please change suffixes according to material/surface required

Order code suffixes		
Material	Suffix surface and material	Example
Steel, zinc plated, Cr(VI)-free	CF	R-124FLFCF
Stainless steel	SS	R-124FLFSS



TF/TF-R – TEE flange

SAE 1000/ISO 6162-1 footprint



Size Inch	Tee Flange Complete Part Order code	Tee Flange body Order code	O-Ring D1	O-Ring D2	D1	D2	L1	L2	Weight (Steel) kg/1 piece	W.P.
1 1/2	R-124LTFCF	TF124LOMDCF	OR47.22X3.53X	OR47.22X3.53X	39.8	39.8	184	92	1.30	70
2-1 1/2-2	R-132-124-132LTFCF	TF132-124-132LOMDCF	OR47.22X3.53X	OR56.75X3.53X	39.8	50.0	200	97	1.58	70
2	R-132LTFCF	TF132LOMDCF	OR56.75X3.53X	OR56.75X3.53X	50.0	50.0	198	99	1.67	70
2 1/2-2-2 1/2	R-140-132-140LTFCF	TF140-132-140LOMDCF	OR56.75X3.53X	OR69.44X3.53X	50.0	62.0	222	105	2.02	70
2 1/2	R-140LTFCF	TF140LOMDCF	OR69.44X3.53X	OR69.44X3.53X	62.0	62.0	222	111	2.09	70
3-2 1/2-3	R-148-140-148LTFCF	TF148-140-148LOMDCF	OR69.44X3.53X	OR85.32X3.53X	62.0	77.8	252	118	2.91	70
3	R-148LTFCF	TF148LOMDCF	OR85.32X3.53X	OR85.32X3.53X	77.8	77.8	252	126	3.22	70
3 1/2-3-3 1/2	R-156-148-156LTFCF	TF156-148-156LOMDCF	OR85.32X3.53X	OR98.02X3.53X	77.8	89.8	283	137	4.47	50
3 1/2	R-156LTFCF	TF156LOMDCF	OR98.02X3.53X	OR98.02X3.53X	89.8	89.8	283	140	4.86	50
4-3-4	R-164-148-164LTFCF	TF164-148-164LOMDCF	OR85.32X3.53X	OR110.72X3.53X	77.8	99.8	293	138	4.84	50
4	R-164LTFCF	TF164LOMDCF	OR110.72X3.53X	OR110.72X3.53X	99.8	99.8	293	145	5.37	50
5-4-5	R-180-164-180LTFCF	TF180-164-180LOMDCF	OR110.72X3.53X	OR136.12X3.53X	99.8	124.8	340	157	7.39	50
5	R-180LTFCF	TF180LOMDCF	OR136.12X3.53X	OR136.12X3.53X	124.8	124.8	341	169	8.04	50
6-5-6	R-196-180-196LTFCF	TF196-180-196LOMDCF	OR136.12X3.53X	OR158.34X3.53X	124.8	149.8	426	188	11.49	50
6	R-196LTFCF	TF196LOMDCF	OR158.34X3.53X	OR158.34X3.53X	149.8	149.8	439	218	12.87	50
8-6-8	R-1128-196-1128LTFCF	TF1128-196-1128LOMDCF	OR158.34X3.53X	OR219.3X5.7X	149.8	206.5	528	243	22.66	50
8	R-1128LTFCF	TF1128LOMDCF	OR219.3X5.7X	OR219.3X5.7X	206.5	206.5	529	263	25.58	50
10	R-1160LTFCF	TF1160LOMDCF	OR269.3X5.7X	OR269.3X5.7X	255.0	255.0	612	306	40.16	50

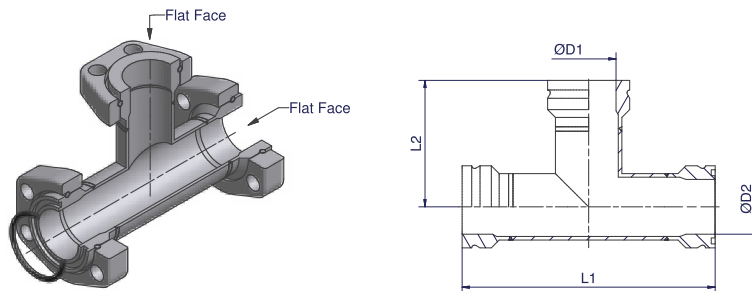
Other sizes on request

Please change suffixes according to material/surface required

Order code suffixes		
Material	Suffix surface and material	Example
Steel, zinc plated, Cr(VI)-free	CF	R-124LTFCF
Stainless steel	SS	R-124LTSS

TF/TF-R – TEE flange flat

SAE 1000/ISO 6162-1 footprint



Size Inch	Tee Flange Complete Part Order code	Tee Flange Body Order code	O-Ring	D1	D2	L1	L2	Weight (Steel) kg/1 piece	W.P.
1 1/2	R-124FTFCF	TF124FOMDCF	OR47.22X3.53X	39.8	39.8	184	92	1.30	70
2-1 1/2-2	R-132-124-132FTFCF	TF132-124-132FOMDCF	OR56.75X3.53X	39.8	50.0	200	97	1.58	70
2	R-132FTFCF	TF132FOMDCF	OR56.75X3.53X	50.0	50.0	198	99	1.67	70
2 1/2-2-2 1/2	R-140-132-140FTFCF	TF140-132-140FOMDCF	OR69.44X3.53X	50.0	62.0	222	105	2.02	70
2 1/2	R-140FTFCF	TF140FOMDCF	OR69.44X3.53X	62.0	62.0	222	111	2.09	70
3-2 1/2-3	R-148-140-148FTFCF	TF148-140-148FOMDCF	OR85.32X3.53X	62.0	77.8	252	118	2.91	70
3	R-148FTFCF	TF148FOMDCF	OR85.32X3.53X	77.8	77.8	252	126	3.22	70
3 1/2-3-3 1/2	R-156-148-156FTFCF	TF156-148-156FOMDCF	OR98.02X3.53X	77.8	89.8	283	137	4.47	50
3 1/2	R-156FTFCF	TF156FOMDCF	OR98.02X3.53X	89.8	89.8	283	140	4.86	50
4-3-4	R-164-148-164FTFCF	TF164-148-164FOMDCF	OR110.72X3.53X	77.8	99.8	293	138	4.84	50
4	R-164FTFCF	TF164FOMDCF	OR110.72X3.53X	99.8	99.8	293	145	5.37	50
5-4-5	R-180-164-180FTFCF	TF180-164-180FOMDCF	OR136.12X3.53X	99.8	124.8	340	157	7.39	50
5	R-180FTFCF	TF180FOMDCF	OR136.12X3.53X	124.8	124.8	341	169	8.04	50
6-5-6	R-196-180-196FTFCF	TF196-180-196FOMDCF	OR158.34X3.53X	124.8	149.8	426	188	11.49	50
6	R-196FTFCF	TF196FOMDCF	OR158.34X3.53X	149.8	149.8	439	218	12.87	50
8-6-8	R-1128-196-1128FTFCF	TF1128-196-1128FOMDCF	OR219.3X5.7X	149.8	206.5	528	243	22.66	50
8	R-1128FTFCF	TF1128FOMDCF	OR219.3X5.7X	206.5	206.5	529	263	25.58	50
10	R-1160FTFCF	TF1160FOMDCF	OR269.3X5.7X	255.0	255.0	612	306	40.16	50

Other sizes on request

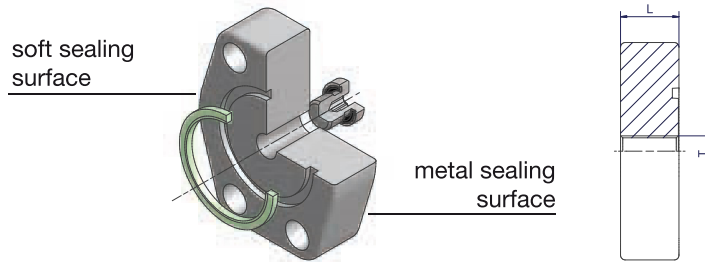
Please change suffixes according to material/surface required

Order code suffixes		
Material	Suffix surface and material	Example
Steel, zinc plated, Cr(VI)-free	CF	R-124FTFCF
Stainless steel	SS	R-124FTFSS



BFV – Blind flange

SAE 1000/ISO 6162-1



Size Inch	L	T	Flange incl. VSTI-ED and F37 Seal Order code	Weight (Steel) kg/1 piece
1 1/2	20	G 1/4	F37-124BFVCF	0.9
2	25	G 1/4	F37-132BFVCF	1.5
2 1/2	30	G 1/4	F37-140BFVCF	2.3
3	30	G 1/4	F37-148BFVCF	3.2
3 1/2	30	G 1/4	F37-156BFVCF	4.0
4	39	G 1/4	F37-164BFVCF	6.1
5	39	G 1/4	F37-180BFVCF	8.3
6	39	G 1/4	F37-196BFVCF	12.9

Other sizes on request

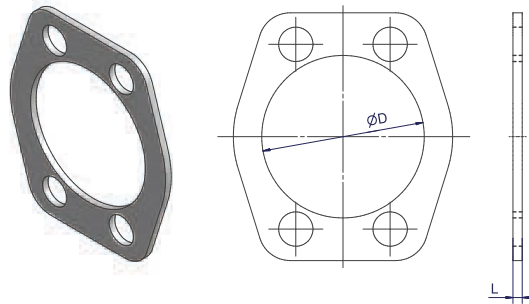
Please change suffixes according to material/surface required

Order code suffixes		
Material	Suffix surface and material	Example
Steel, zinc plated, Cr(VI)-free	CF	F37-120BFVCF
Stainless steel	SS	F37-120BFVSS

Parflange® F37 – SAE 1000/ISO 6162-1 footprint

CPML – F37 inner plate

SAE 1000/ISO 6162-1 footprint



Size Inch	L	D	F37 Inner Plate Order code	Weight (Steel) kg/1 piece
1 1/2	3.5	39.8	24CPMLCFX	0.13
2	3.5	50.0	32CPMLCFX	0.15
2 1/2	3.5	62.0	40CPMLCFX	0.19
3	3.5	77.8	48CPMLCFX	0.25

Other sizes on request

Please change suffixes according to material/surface required

Order code suffixes		
Material	Suffix surface and material	Example
Steel	CF	24CPMLCFX
Stainless steel	SS	24CPMLSSX



Bolts and nuts for flange

SAE 1000/ISO 6162-1 footprint



F37 Flare Flange

Size Inch	Flange	Soft Seal / Flat Face		Nut
		Bolts Tube to Port	Bolts Tube to Tube	
1 1/2	F37-124-CFX	4 x ZYLS12X40	4 x ZYLS12X70	4 x ISO4032-M12
2	F37-132-CFX	4 x ZYLS12X45	4 x ZYLS12X80	4 x ISO4032-M12
2 1/2	F37-140-CFX	4 x ZYLS12X50	4 x ZYLS12X90	4 x ISO4032-M12
3	F37-148-CFX	4 x ZYLS16X60	4 x ZYLS16X100	4 x ISO4032-M16
3 1/2	F37-156-CFX	4 x ZYLS16X60	4 x ZYLS16X100	4 x ISO4032-M16
4	F37-164-CFX	4 x ZYLS16X65	4 x ZYLS16X120	4 x ISO4032-M16
5	F37-180-CFX	4 x ZYLS16X65	4 x ZYLS16X120	4 x ISO4032-M16
6	F37-196-CFX	6 x ZYLS16X65	6 x ZYLS16X110	6 x ISO4032-M16
8	F37-1128-CFX	8 x ZYLS20X80	8 x ZYLS20X145	8 x ISO4032-M20

Retaining Ring Flange

Size Inch	Flange	Soft Seal / Flat Face		Nut
		Bolts Tube to Port	Bolts Tube to Tube	
1 1/2	R-124-CFX	4 x ZYLS12X40	4 x ZYLS12X65	4 x ISO4032-M12
2	R-132-CFX	4 x ZYLS12X40	4 x ZYLS12X65	4 x ISO4032-M12
2 1/2	R-140-CFX	4 x ZYLS12X40	4 x ZYLS12X65	4 x ISO4032-M12
3	R-148-CFX	4 x ZYLS16X50	4 x ZYLS16X80	4 x ISO4032-M16
3 1/2	R-156-CFX	4 x ZYLS16X55	4 x ZYLS16X90	4 x ISO4032-M16
4	R-164-CFX	4 x ZYLS16X55	4 x ZYLS16X90	4 x ISO4032-M16
5	R-180-CFX	4 x ZYLS16X70	4 x ZYLS16X110	4 x ISO4032-M16
6	R-196-CFX	6 x ZYLS16X70	6 x ZYLS16X110	6 x ISO4032-M16
8	R-1128-CFX	8 x ZYLS20X70	8 x ZYLS20X120	8 x ISO4032-M20
10	R-1160-CFX	8 x ZYLS20X80	8 x ZYLS20X150	8 x ISO4032-M20

Bolts and nuts must be ordered separately.

Latest information about nuts and bolts see www.parker.com/tfde/servicemanuals/userguides

Please add the suffixes according to the bolt quality

Quality	Steel		Stainless Steel
	8.8	10.9	
Bolt	ZYLS16X60X	ZYLS16X60109X	ZYLS16X60A4-80X
Nut	ISO-4032-M12-8VZX	ISO-4032-M12-10X	ISO-4032-M12-80X